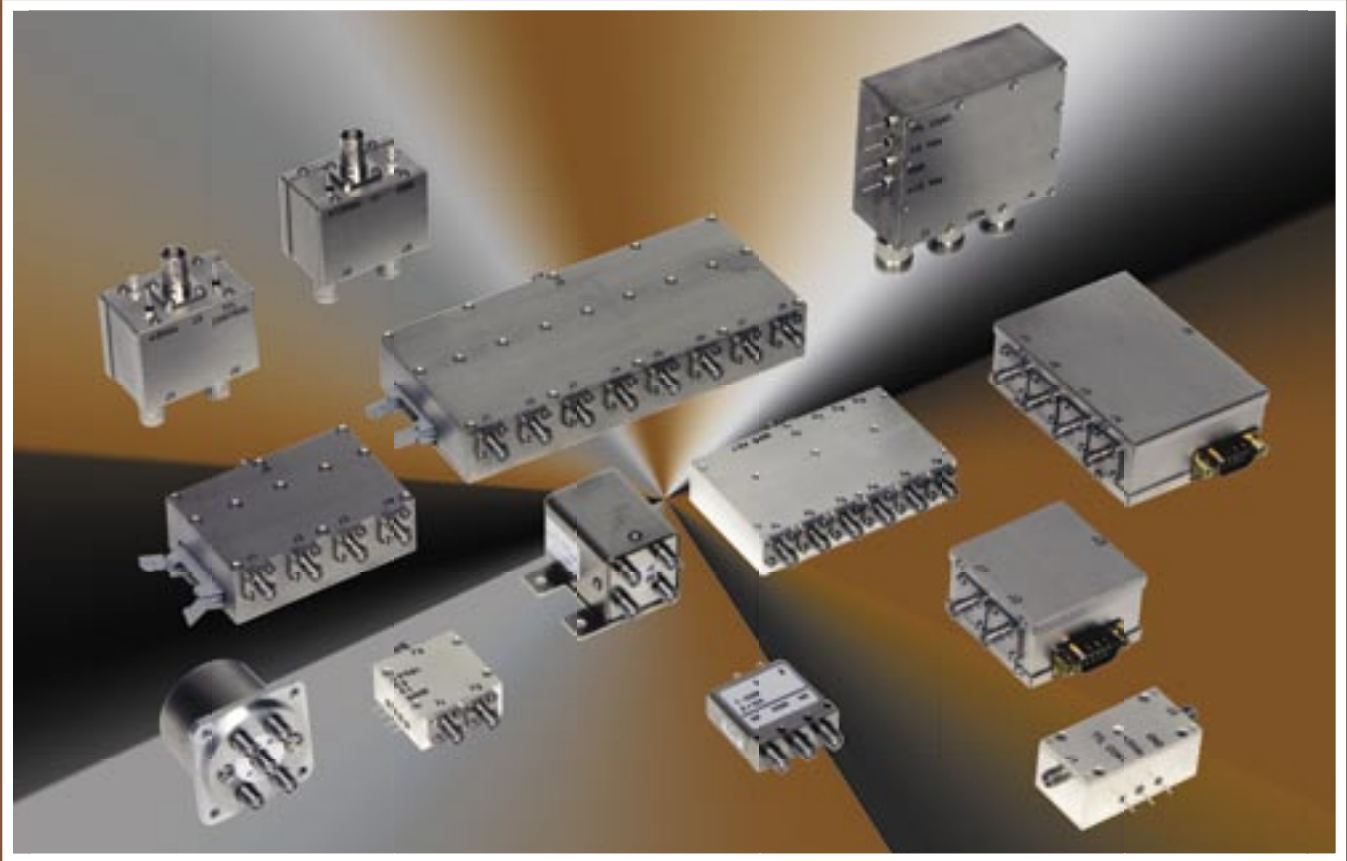


RF Coaxial Switches

JFW is one of the world's foremost authorities on RF switching. We offer an extensive line of Electro-mechanical and Solid-state, coaxial switches for a wide range of RF and microwave applications.

Choose the RF switch that is right for you from our thousands of existing switches or send us the exact specifications you are looking for and let us design a switch with your needs in mind.



Available Features

- Electro-mechanical switches up to 18 GHz and 1000 Watts
- Solid-state, PIN diode switches up to 4.3 GHz
- High-power, PIN diode switches up to 300W CW
- Hot switch 250 Watts of RF power
- 50 Ohm and 75 Ohm switches
(other impedance values also available upon request)
- Choose any RF connector combination (BNC, SMA, N, TNC, 7/16, F, reverse polarity and more)
- Switches available with TTL driver and a variety of control voltages
- Fail-safe & latching switch designs
- Switch indicator circuitry
- Ask about phase constant and phase tracking RF switch designs

AFFORDABLE CUSTOM DESIGNS ARE ALSO AVAILABLE!

Call 317-887-1340 • Toll Free 877-887-4539 • Fax 317-881-6790
E-mail sales@jfwindustries.com • www.jfwindustries.com

RF Switches

Model Number Index

Please add connector type to the end of part number to complete model number (Example: 50S-348 SMA).

Solid-state - 50 Ohm			
Model Number	Frequency Range	Configuration	Page
50S-348	5-2000 MHz	1P2T	6-6
50S-381	100-1250 MHz	1P8T	6-8
50S-534	20-1000 MHz	1P2T	6-4
50S-535	20-1000 MHz	1P3T	6-4
50S-536	20-1000 MHz	1P4T	6-4
50S-642	5-3000 MHz	1P1T	6-6
50S-785	20-2000 MHz	1P1T	6-6
50S-847	50-2000 MHz	1P6T	6-8
50S-884	50-2000 MHz	1P4T	6-8
50S-960	800-2200 MHz	1P12T	6-10
50S-963	800-2200 MHz	1P4T	6-10
50S-964	800-2200 MHz	1P8T	6-10
50S-976	750-4300 MHz	1P2T	6-6
50S-979	5-2500 MHz	1P2T	6-6
50S-1011	400-2000 MHz	1P8T	6-8
50S-1035	20-4300 MHz	1P4T	6-12
50S-1075	20-4300 MHz	1P4T	6-12
50S-1090	800-3000 MHz	1P8T	6-10
50S-1163	20-4300 MHz	1P2T	6-12
50S-1173	800-3000 MHz	1P4T	6-10
50S-1199	20-4300 MHz	1P8T	6-12
50S-1220	20-4300 MHz	1P2T	6-12
50S-1310	20-4300 MHz	1P8T	6-12
50S-1312	800-2500 MHz	1P12T	6-10
50S-1324	800-2200 MHz	1P1T	6-6
50S-1337	800-3000 MHz	1P1T	6-6
50S-1382	5-2500 MHz	1P3T	6-6
Solid State - 75 Ohm			
Model Number	Frequency Range	Configuration	Page
75S-081	5-1000 MHz	1P2T	6-18
75S-181	5-1000 MHz	1P8T	6-18
75S-225	5-1000 MHz	1P4T	6-18
75S-264	20-1000 MHz	1P16T	6-18

Electro-mechanical - 50 Ohm			
Model Number	Frequency Range	Configuration	Page
50S-1313	DC-18 GHz	1P2T	6-24
50S-1315	DC-18 GHz	1P4T	6-24
50S-1316	DC-18 GHz	1P6T	6-26
50S-1317	DC-18 GHz	1P8T	6-26
50S-1360	DC-18 GHz	1P3T	6-24
50S-1361	DC-18 GHz	Transfer	6-28
Electro-mechanical - 75 Ohm			
Model Number	Frequency Range	Configuration	Page
75S-111	DC-2150 MHz	1P2T	6-20
75S-221	DC-2150 MHz	1P8T	6-20
75S-284	DC-2000 MHz	1P2T	6-22
75S-285	DC-2000 MHz	1P3T	6-22
75S-295	DC-2000 MHz	1P4T	6-22
75S-303	DC-2150 MHz	1P16T	6-20
75S-306	DC-2150 MHz	1P4T	6-20

High Power Solid-state - 50 Ohm			
Model Number	Frequency Range	Configuration	Page
50S-1268	100-500 MHz	1P2T	6-14
50S-1352	800-2500 MHz	1P2T	6-14
50S-1407	100-500 MHz	1P3T	6-16
50S-1422	100-500 MHz	1P2T	6-14
50S-1505	20-2500 MHz	1P2T	6-14
50S-1524	100-500 MHz	1P6T	6-16
50S-1525	100-500 MHz	1P4T	6-16
50S-1559	20-1000 MHz	1P2T	6-14
50S-1820	800-2700 MHz	1P2T	6-15
50S-1821	800-3000 MHz	1P2T	6-15
50S-1841	500-3000 MHz	1P2T	6-15

RF Switches

Index by Configuration

Please add connector type to the end of part number to complete model number (Example: 50S-348 SMA).

Solid-state - 50 Ohm			
Configuration	Frequency Range	Model Number	Page
1P1T	5-3000 MHz	50S-642	6-6
1P1T	20-2000 MHz	50S-785	6-6
1P1T	800-2200 MHz	50S-1324	6-6
1P1T	800-3000 MHz	50S-1337	6-6
1P2T	5-2000 MHz	50S-348	6-6
1P2T	5-2500 MHz	50S-979	6-6
1P2T	20-1000 MHz	50S-534	6-4
1P2T	20-4300 MHz	50S-1163	6-12
1P2T	20-4300 MHz	50S-1220	6-12
1P2T	750-4300 MHz	50S-976	6-6
1P3T	5-2500 MHz	50S-1382	6-6
1P3T	20-1000 MHz	50S-535	6-4
1P4T	20-1000 MHz	50S-536	6-4
1P4T	20-4300 MHz	50S-1035	6-12
1P4T	20-4300 MHz	50S-1075	6-12
1P4T	50-2000 MHz	50S-884	6-8
1P4T	800-2200 MHz	50S-963	6-10
1P4T	800-3000 MHz	50S-1173	6-10
1P6T	50-2000 MHz	50S-847	6-8
1P8T	20-4300 MHz	50S-1199	6-12
1P8T	20-4300 MHz	50S-1310	6-12
1P8T	100-1250 MHz	50S-381	6-8
1P8T	400-2000 MHz	50S-1011	6-8
1P8T	800-2200 MHz	50S-964	6-10
1P8T	800-3000 MHz	50S-1090	6-10
1P12T	800-2200 MHz	50S-960	6-10
1P12T	800-2500 MHz	50S-1312	6-10
Solid-state - 75 Ohm			
Configuration	Frequency Range	Model Number	Page
1P2T	5-1000 MHz	75S-081	6-18
1P4T	5-1000 MHz	75S-225	6-18
1P8T	5-1000 MHz	75S-181	6-18
1P16T	20-1000 MHz	75S-264	6-18

Electro-mechanical - 50 Ohm			
Configuration	Frequency Range	Model Number	Page
1P2T	DC-18 GHz	50S-1313	6-24
1P3T	DC-18 GHz	50S-1360	6-24
1P4T	DC-18 GHz	50S-1315	6-24
1P6T	DC-18 GHz	50S-1316	6-26
1P8T	DC-18 GHz	50S-1317	6-26
Transfer	DC-18 GHz	50S-1361	6-28
Electro-mechanical - 75 Ohm			
Configuration	Frequency Range	Model Number	Page
1P2T	DC-2150 MHz	75S-111	6-20
1P2T	DC-2000 MHz	75S-284	6-22
1P3T	DC-2000 MHz	75S-285	6-22
1P4T	DC-2000 MHz	75S-295	6-22
1P4T	DC-2150 MHz	75S-306	6-20
1P8T	DC-2150 MHz	75S-221	6-20
1P16T	DC-2150 MHz	75S-303	6-20

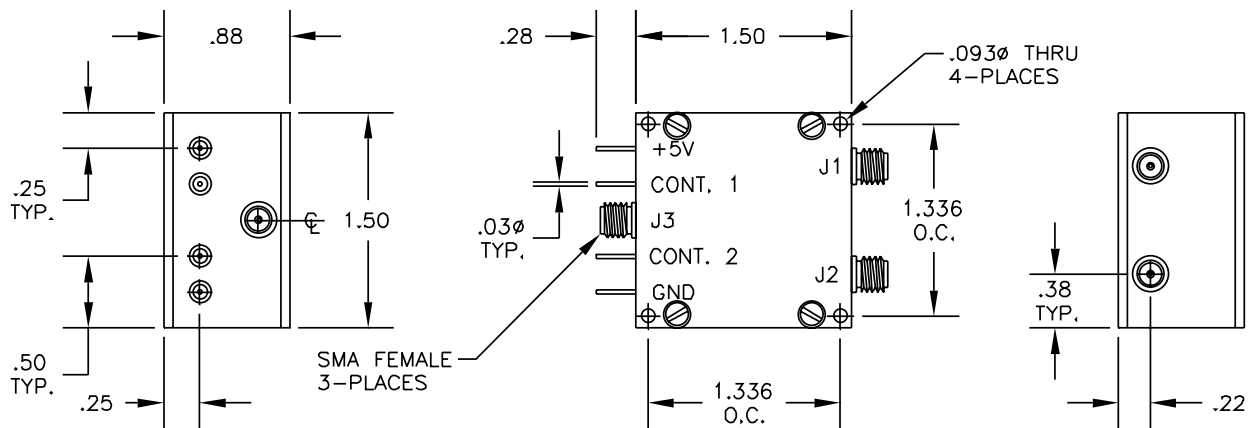
High Power Solid-state - 50 Ohm			
Configuration	Frequency Range	Model Number	Page
1P2T	20-2500 MHz	50S-1505	6-14
1P2T	20-1000 MHz	50S-1559	6-14
1P2T	100-500 MHz	50S-1268	6-14
1P2T	100-500 MHz	50S-1422	6-14
1P2T	500-3000 MHz	50S-1841	6-15
1P2T	800-2500 MHz	50S-1352	6-14
1P2T	800-2700 MHz	50S-1820	6-15
1P2T	800-3000 MHz	50S-1821	6-15
1P3T	100-500 MHz	50S-1407	6-16
1P4T	100-500 MHz	50S-1525	6-16
1P6T	100-500 MHz	50S-1524	6-16

VHF/UHF Solid State Coaxial Switches

Model	Configuration	Frequency Range	Isolation (minimum)	VSWR (maximum)	Insertion Loss (maximum)	RF Connectors
50S-534	1P2T (reflective)	20-1000 MHz	70 dB	1.4:1	1.5 dB 20-500 MHz 2 dB 500-1000 MHz	SMA female
50S-535	1P3T (reflective)	20-1000 MHz	70 dB	1.4:1	1.5 dB 20-500 MHz 2 dB 500-1000 MHz	SMA female
50S-536	1P4T (reflective)	20-1000 MHz	70 dB	1.4:1	1.5 dB 20-500 MHz 2 dB 500-1000 MHz	SMA female

Model	Impedance	Switching Speed	RF Input Power	Supply Voltage	Control Logic	Operating Temperature
50S-534	50 Ohms	5 microseconds	+13 dBm	+5 Vdc @ 150 mA	(2 lines) TTL low-off (reflective) TTL high-on	-20° C to +85° C
50S-535	50 Ohms	5 microseconds	+13 dBm	+5 Vdc @ 150 mA	(3 lines) TTL low-off (reflective) TTL high-on	-20° C to +85° C
50S-536	50 Ohms	5 microseconds	+13 dBm	+5 Vdc @ 150 mA	(4 lines) TTL low-off (reflective) TTL high-on	-20° C to +85° C

50S-534

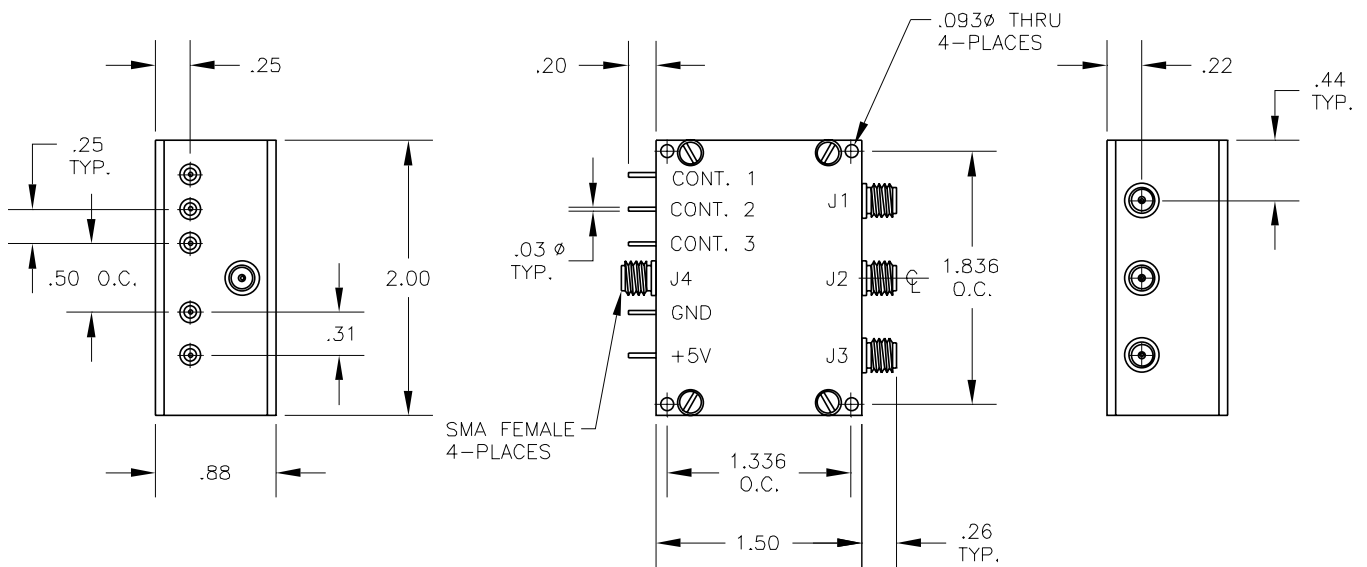


J3 TO	C1	C2
J1	1	0
J2	0	1
OFF	0	0

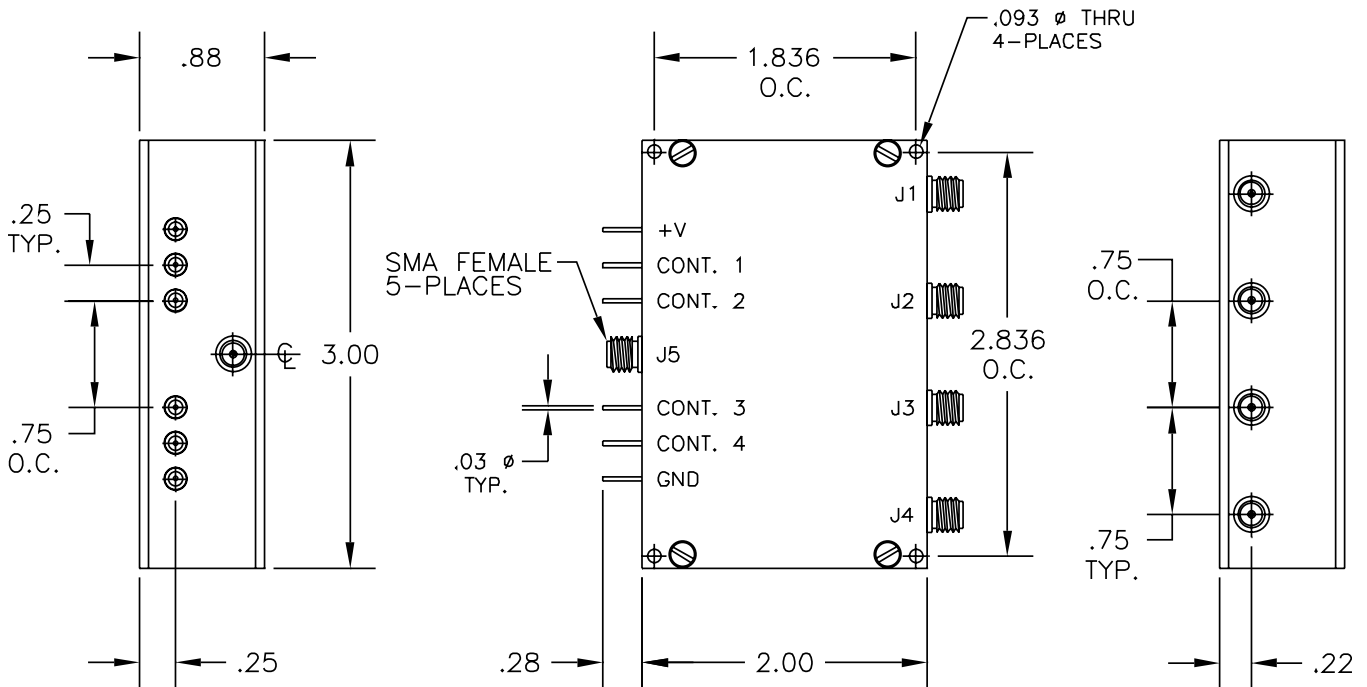
This represents only 10% of our products. For YOUR application, contact JFW at 1-877-887-4JFW or sales@jfwindustries.com

VHF/UHF Solid State Coaxial Switches

50S-535



50S-536



This represents only 10% of our products. For YOUR application, contact JFW at 1-877-887-4JFW or sales@jfwindustries.com

Wideband Solid State Coaxial Switches

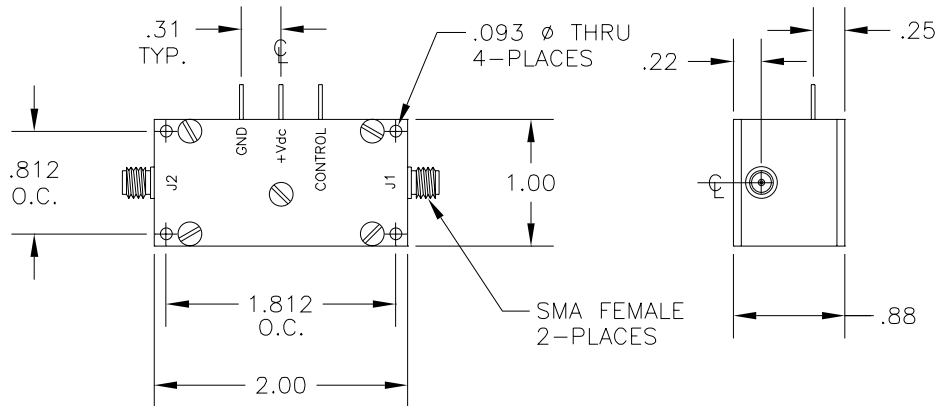
Model	Configuration	Frequency Range	Isolation (minimum)	VSWR (maximum)	Insertion Loss (maximum)	RF Connectors
50S-642	1P1T (reflective)	5-3000 MHz	80 dB 5-500 MHz 60 dB 500-3000 MHz	1.4:1	2.0 dB	SMA female
50S-785	1P1T (reflective)	20-2000 MHz	60 dB	1.4:1	1.5 dB	SMA female
50S-1324	1P1T (absorptive)	800-2200 MHz	55 dB	1.4:1	1.5 dB	SMA female
50S-1337	1P1T (absorptive)	800-3000 MHz	50 dB	1.5:1	1.25 dB 800-1000 MHz 2.25 dB 1000-3000 MHz	SMA female
50S-348	1P2T (reflective)	5-2000 MHz	60 dB 5-1000 MHz 50 dB 1000-2000 MHz	1.4:1	1.0 dB 5-1000 MHz 1.5 dB 1000-2000 MHz	SMA female
50S-979	1P2T (absorptive)	5-2500 MHz	60 dB 5-1000 MHz 50 dB 1000-2200 MHz 45 dB 2200-2500 MHz	1.4:1	1.0 dB 5-1000 MHz 1.5 dB 1000-2200 MHz 2.0 dB 2200-2500 MHz	SMA female
50S-976	1P2T (reflective)	750-4300 MHz	50 dB 750-2000 MHz 40 dB 2000-3500 MHz 30 dB 3500-4300 MHz	1.4:1	1.5 dB	SMA female
50S-1382	1P3T (reflective)	5-2500 MHz	55 dB 5-1000 MHz 45 dB 1000-2500 MHz	1.5:1	1.0 dB 5-1000 MHz 1.5 dB 1000-2000 MHz 2.0 dB 2000-2500 MHz	SMA female

Model	Impedance	Switching Speed	RF Input Power	Supply Voltage	Control Logic	Operating Temperature
50S-642	50 Ohms	20 microseconds	+10 dBm 5-1500 MHz +20 dBm 1500-3000 MHz	+5 Vdc @ 100 mA	(1 line) TTL low-off (reflective) TTL high-on	0° C to +70° C
50S-785	50 Ohms	500 nanoseconds	+10 dBm	+5 Vdc @ 125 mA	(1 line) TTL low-off (reflective) TTL high-on	0° C to +70° C
50S-1324	50 Ohms	10 microseconds	+20 dBm	+5 Vdc @ 150 mA	(1 line) TTL low-off ports are internally terminated into 50 Ohms (both ports) TTL high-on	0° C to +70° C
50S-1337	50 Ohms	500 nanoseconds	+20 dBm	+5 Vdc @ 100 mA	(1 line) TTL low-off ports are internally terminated into 50 Ohms (both ports) TTL high-on	0° C to +70° C
50S-348	50 Ohms	5 microseconds	+5 dBm	+5 Vdc @ 150 mA	(2 lines) TTL low-off (reflective) TTL high-on	0° C to +70° C
50S-979	50 Ohms	5 microseconds	+10 dBm	+5 Vdc @ 150 mA	(2 lines) TTL low-off ports are internally terminated into 50 Ohms TTL high-on	0° C to +70° C
50S-976	50 Ohms	5 microseconds	+10 dBm	+5 Vdc @ 150 mA	(2 lines) TTL low-off (reflective) TTL high-on	0° C to +70° C
50S-1382	50 Ohms	20 microseconds	+5 dBm	+5 Vdc @ 150 mA	(3 lines) TTL low-off (reflective) TTL high-on	0° C to +70° C

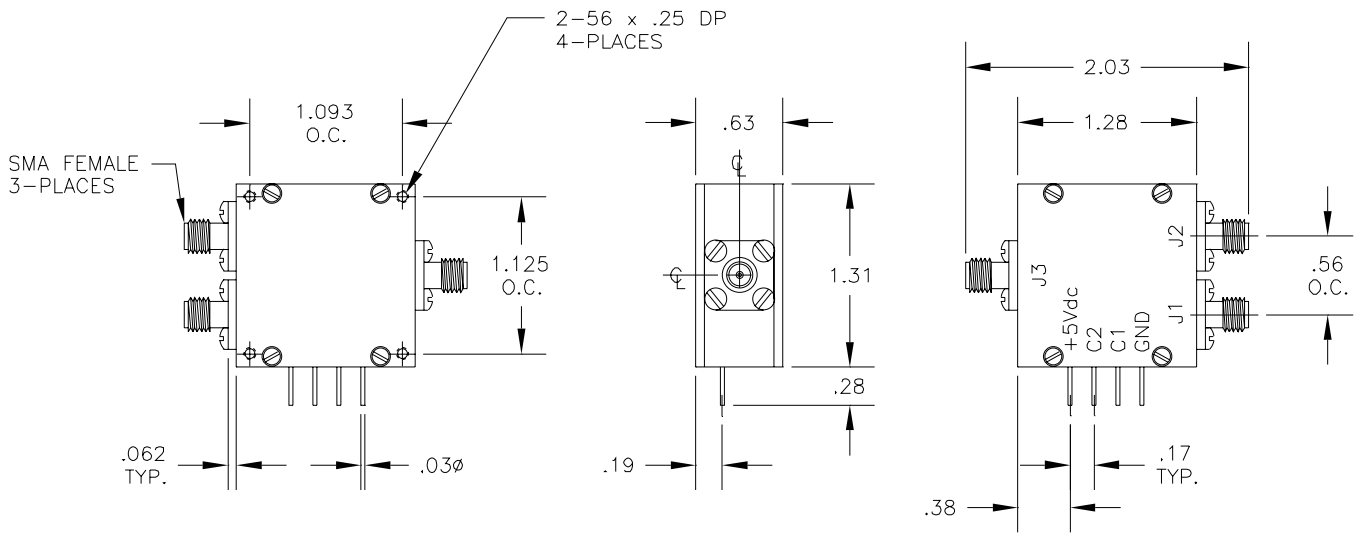
This represents only 10% of our products. For YOUR application, contact JFW at 1-877-887-4JFW or sales@jfwindustries.com

Wideband Solid State Coaxial Switches

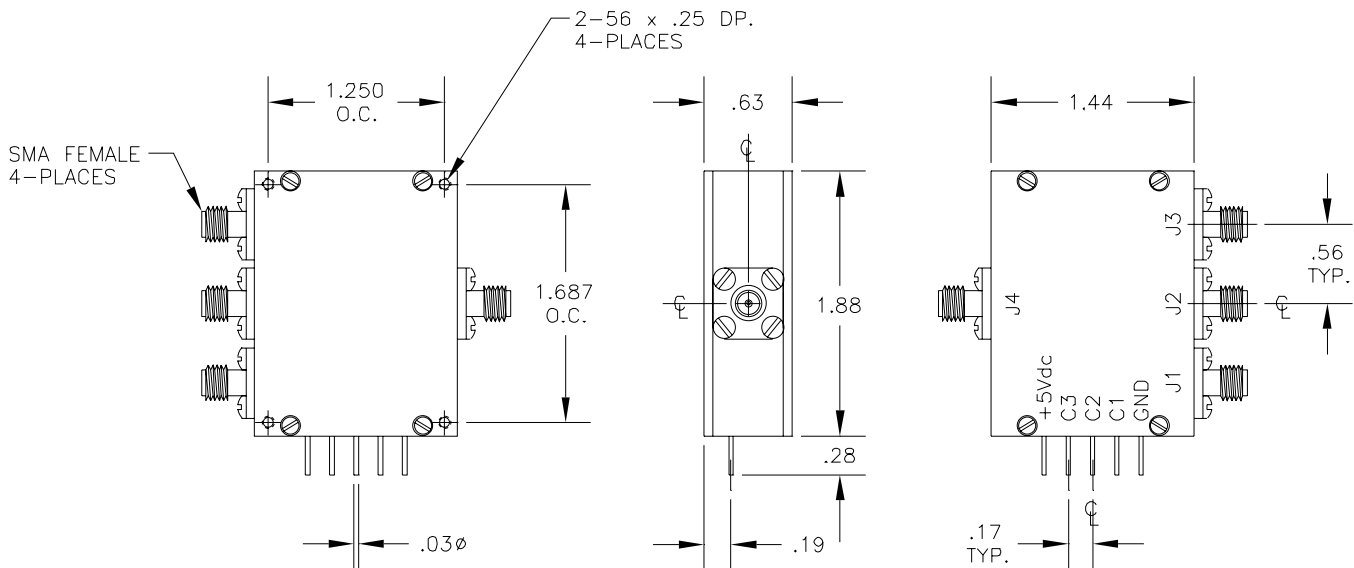
50S-642 / 50S-785 / 50S-1324 / 50S-1337



50S-348 / 50S-976 / 50S-979



50S-1382



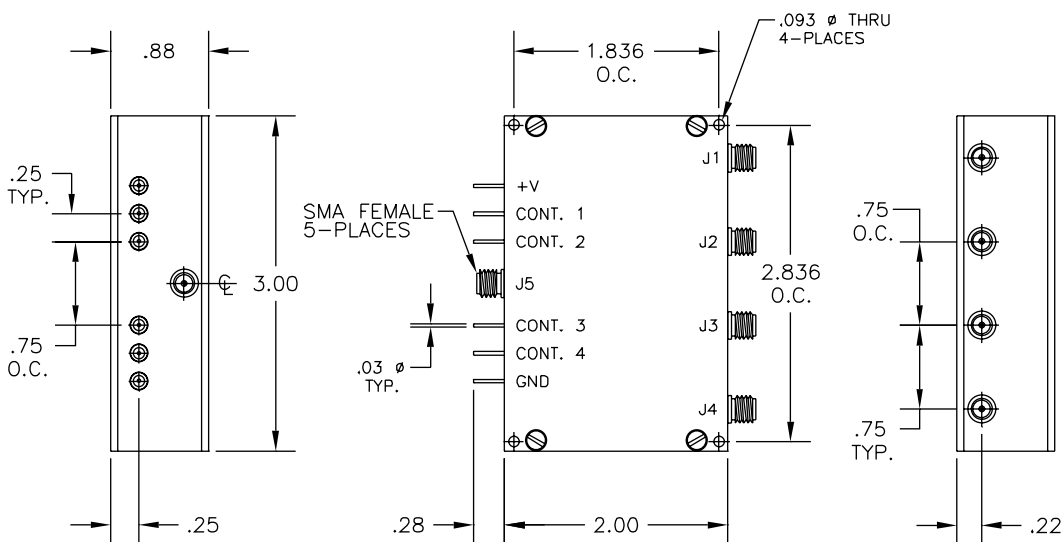
This represents only 10% of our products. For YOUR application, contact JFW at 1-877-887-4JFW or sales@jfwindustries.com

Wideband Solid State Coaxial Switch

Model	Configuration	Frequency Range	Isolation (minimum)	VSWR (maximum)	Insertion Loss (maximum)	RF Connectors
50S-884	1P4T (reflective)	50-2000 MHz	65 dB 50-1000 MHz 55 dB 1000-2000 MHz	1.4:1	1.5 dB 50-500 MHz 2.0 dB 500-1000 MHz 2.5 dB 1000-2000 MHz	SMA female
50S-847	1P6T (absorptive)	50-2000 MHz	70 dB 50-1500 MHz 55 dB 1500-2000 MHz	1.3:1 50-750 MHz 1.4:1 750-1500 MHz 1.5:1 1500-2000 MHz	1.5 dB 50-750 MHz 2.0 dB 750-1500 MHz 3.0 dB 1500-2000 MHz	SMA female
50S-381	1P8T (absorptive)	100-1250 MHz	65 dB 100-750 MHz 60 dB 750-1250 MHz	1.3:1 100-750 MHz 1.4:1 750-1250 MHz	1.5 dB 100-750 MHz 2.0 dB 750-1250 MHz	SMA female
50S-1011	1P8T (absorptive)	400-2000 MHz	65 dB 400-1000 MHz 55 dB 1000-2000 MHz	1.5:1	2.0 dB 400-1000 MHz 3.0 dB 1000-2000 MHz	SMA female

Model	Impedance	Switching Speed	RF Input Power	Supply Voltage	Control Logic	Operating Temperature
50S-884	50 Ohms	5 microseconds	+13 dBm	+5 Vdc @ 150 mA	(4 lines) TTL low-off (reflective) TTL high-on	-20° C to +85° C
50S-847	50 Ohms	1 microsecond	+10 dBm	+5 Vdc @ 250 mA	(3 lines) TTL low-off ports are internally terminated into 50 Ohms TTL high-on	0° C to +70° C
50S-381	50 Ohms	1 microsecond	+10 dBm	+5 Vdc @ 150 mA	(8 lines) TTL low-off ports terminated into 50 Ohms TTL high-on	0° C to +70° C
50S-1011	50 Ohms	10 microseconds	+20 dBm	+5 Vdc @ 150 mA	(8 lines) TTL low-off ports terminated into 50 Ohms TTL high-on	0° C to +70° C

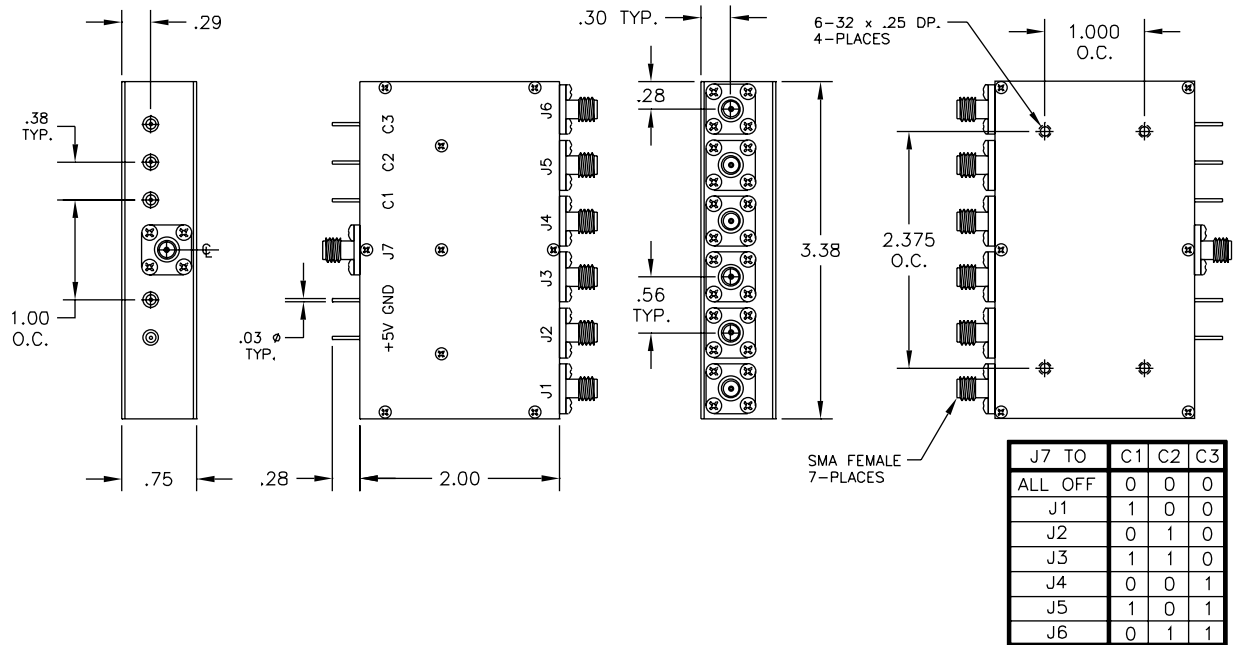
50S-884



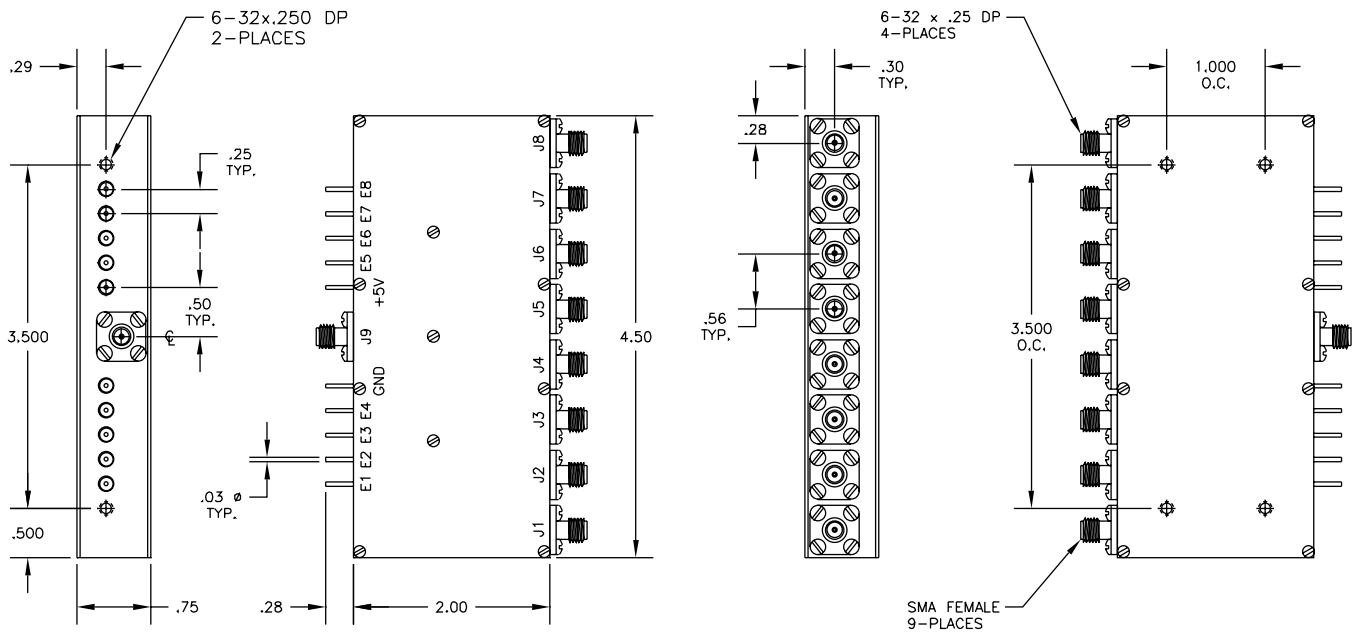
This represents only 10% of our products. For YOUR application, contact JFW at 1-877-887-4JFW or sales@jfwindustries.com

Wide Band Solid State Coaxial Switches

50S-847



50S-381 / 50S-1011



This represents only 10% of our products. For YOUR application, contact JFW at 1-877-887-4JFW or sales@jfwindustries.com

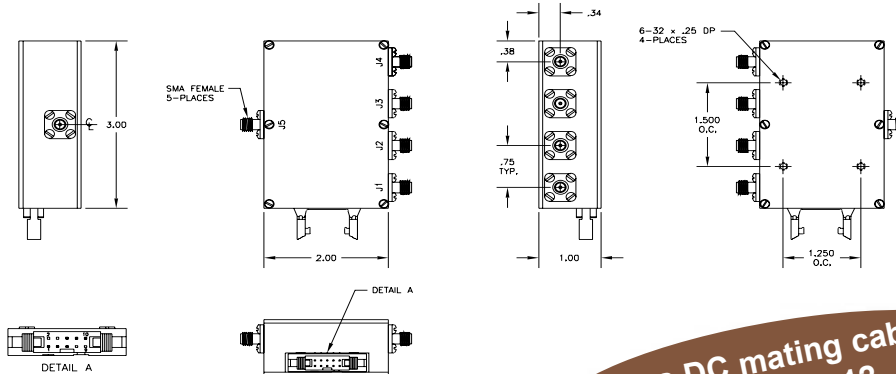
Cellular Band Solid State Coaxial Switches

All models are Absorptive

Model	Configuration	Frequency Range	Isolation (minimum)	VSWR (maximum)	Insertion Loss (maximum)	RF Connectors
50S-963	1P4T (absorptive)	800-2200 MHz	50 dB	1.4:1 800-1000 MHz 1.5:1 1000-2200 MHz	2.5 dB 800-1000 MHz 3.5 dB 1000-2200 MHz	SMA female
50S-1173	1P4T (absorptive)	800-3000 MHz	50 dB	1.4:1	3 dB 800-1000 MHz 4 dB 1000-3000 MHz	SMA female
50S-964	1P8T (absorptive)	800-2200 MHz	50 dB	1.4:1 800-1000 MHz 1.5:1 1000-2200 MHz	3 dB 800-1000 MHz 4 dB 1000-2200 MHz	SMA female
50S-1090	1P8T (absorptive)	800-3000 MHz	60 dB 800-1000 MHz 55 dB 1000-2000 MHz 50 dB 2000-3000 MHz	1.5:1	3 dB 800-2000 MHz 4 dB 2000-3000 MHz	SMA female
50S-960	1P12T (absorptive)	800-2200 MHz	50 dB	1.5:1	3 dB 800-1500 MHz 4.5 dB 1500-2200 MHz	SMA female
50S-1312	1P12T (absorptive)	800-2500 MHz	50 dB	1.5:1	3 dB 800-1500 MHz 4.5 dB 1500-2500 MHz	SMA female

Model	Impedance	Switching Speed	RF Input Power	Supply Voltage	Control Logic	Operating Temperature
50S-963	50 Ohms	10 microseconds	+20 dBm	+5 Vdc @ 200 mA -5 Vdc @ 200 mA	(3 lines) TTL, off ports are internally terminated into 50 Ohms	0° C to +70° C
50S-1173	50 Ohms	10 microseconds	+10 dBm	+5 Vdc @ 200 mA -5 Vdc @ 200 mA	(3 lines) TTL, off ports are internally terminated into 50 Ohms	0° C to +70° C
50S-964	50 Ohms	10 microseconds	+20 dBm	+5 Vdc @ 400 mA -5 Vdc @ 400 mA	(4 lines) TTL, off ports are internally terminated into 50 Ohms	0° C to +70° C
50S-1090	50 Ohms	10 microseconds	+20 dBm	+5 Vdc @ 200 mA -5 Vdc @ 400 mA	(4 lines) TTL, off ports are internally terminated into 50 Ohms	0° C to +70° C
50S-960	50 Ohms	10 microseconds	+20 dBm	+5 Vdc @ 200 mA -5 Vdc @ 500 mA	(4 lines) TTL, off ports are internally terminated into 50 Ohms	0° C to +70° C
50S-1312	50 Ohms	10 microseconds	+20 dBm	+5 Vdc @ 200 mA -5 Vdc @ 500 mA	(4 lines) TTL, off ports are internally terminated into 50 Ohms	0° C to +70° C

50S-963 / 50S-1173



DETAIL A
3M# 5793-5503

PIN	FUNCTION
1	CONTROL
2	NO CONNECTION
3	CONTROL 2
4	NO CONNECTION
5	CONTROL 3
6	+5 Vdc
7	NO CONNECTION
8	-5 Vdc
9	NO CONNECTION
10	GROUND

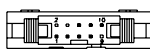
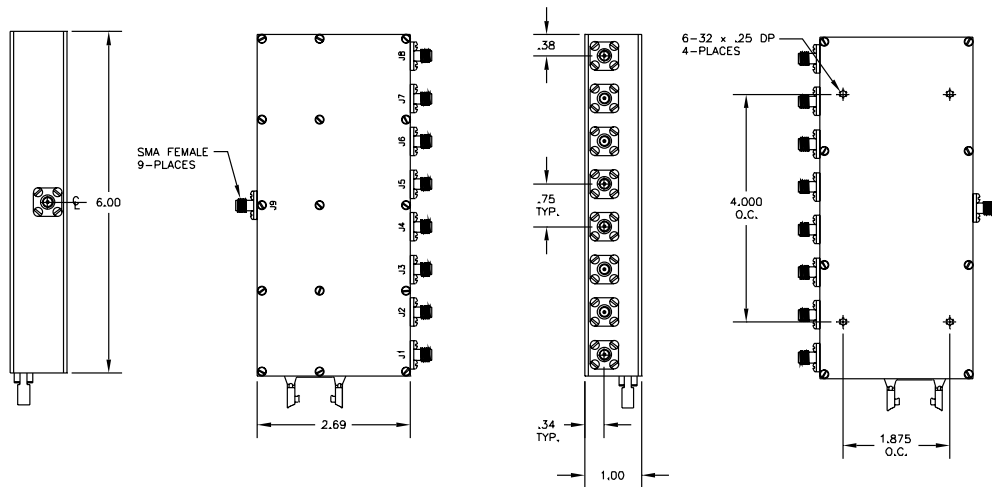
J5 TO:	CONT. 1	CONT. 2	CONT. 3
NONE	0	0	0
J1	1	0	0
J2	0	1	0
J3	1	1	0
J4	0	0	1

For a DC mating cable, see page 8-12.

This represents only 10% of our products. For YOUR application, contact JFW at 1-877-887-4JFW or sales@jfwindustries.com

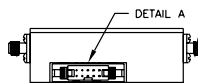
Cellular Band Solid State Coaxial Switches

50S-964 / 50S-1090



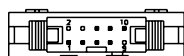
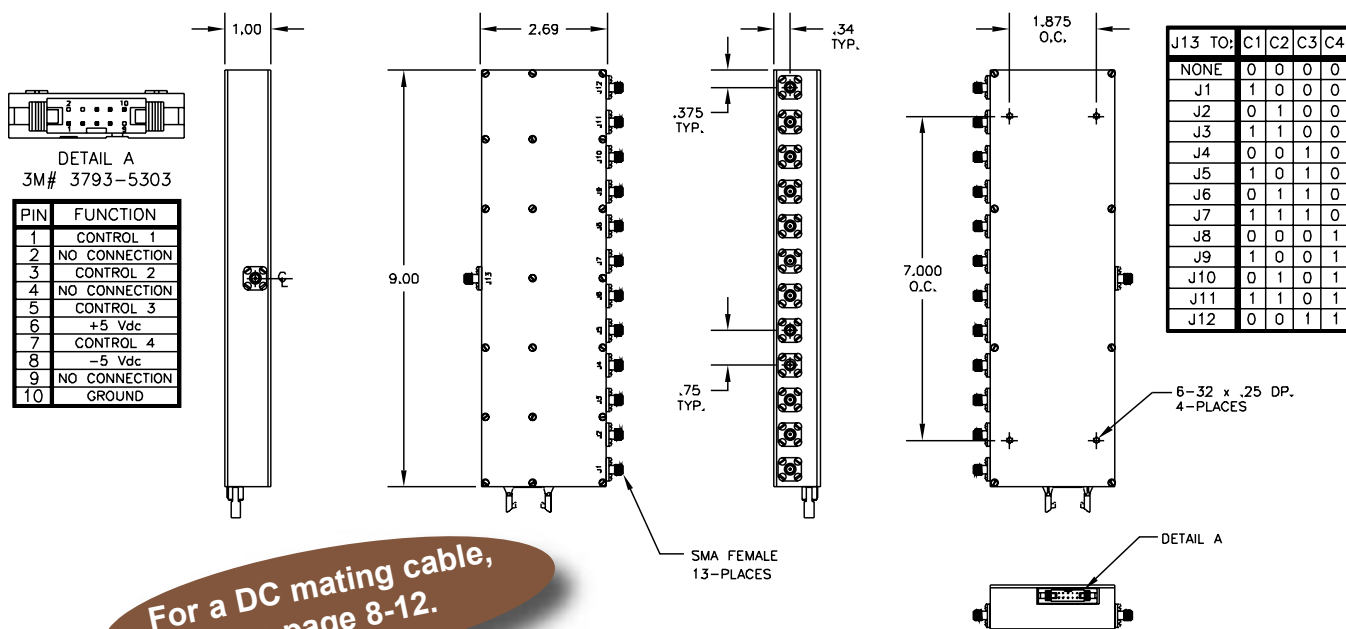
DETAIL A
3M# 3793-5303

PIN	FUNCTION
1	CONTROL 1
2	NO CONNECTION
3	CONTROL 2
4	NO CONNECTION
5	CONTROL 3
6	+5 Vdc
7	CONTROL 4
8	-5 Vdc
9	NO CONNECTION
10	GROUND



J9 TO:	CONT. 1	CONT. 2	CONT. 3	CONT. 4
NONE	0	0	0	0
J1	1	0	0	0
J2	0	1	0	0
J3	1	1	0	0
J4	0	0	1	0
J5	1	0	1	0
J6	0	1	1	0
J7	1	1	1	0
J8	0	0	0	1

50S-960 / 50S-1312



DETAIL A
3M# 3793-5303

PIN	FUNCTION
1	CONTROL 1
2	NO CONNECTION
3	CONTROL 2
4	NO CONNECTION
5	CONTROL 3
6	+5 Vdc
7	CONTROL 4
8	-5 Vdc
9	NO CONNECTION
10	GROUND

J13 TO:	C1	C2	C3	C4
NONE	0	0	0	0
J1	1	0	0	0
J2	0	1	0	0
J3	1	1	0	0
J4	0	0	1	0
J5	1	0	1	0
J6	0	1	1	0
J7	1	1	1	0
J8	0	0	0	1
J9	1	0	0	1
J10	0	1	0	1
J11	1	1	0	1
J12	0	0	1	1

For a DC mating cable, see page 8-12.

4.3 GHz Wide Band Solid State Coaxial Switches

Model	Configuration	Frequency Range	Isolation (minimum)	VSWR (maximum)	Insertion Loss (maximum)	RF Connectors
50S-1163	1P2T (reflective)	20-4300 MHz	80 dB 20-1000 MHz 70 dB 1000-2000 MHz 60 dB 2000-4000 MHz 55 dB 4000-4300 MHz	1.5:1	1.5 dB 20-1000 MHz 3 dB 1000-4300 MHz	SMA female
50S-1220	1P2T (absorptive)	20-4300 MHz	80 dB 20-1000 MHz 70 dB 1000-2000 MHz 60 dB 2000-4000 MHz 55 dB 4000-4300 MHz	1.5:1	1.5 dB 20-1000 MHz 3 dB 1000-4300 MHz	SMA female
50S-1035	1P4T (reflective)	20-4300 MHz	80 dB 20-1000 MHz 70 dB 1000-2000 MHz 60 dB 2000-4000 MHz 55 dB 4000-4300 MHz	1.5:1	2 dB 20-1000 MHz 4 dB 1000-4300 MHz	SMA female
50S-1075	1P4T (absorptive)	20-4300 MHz	75 dB 20-1000 MHz 65 dB 1000-2000 MHz 55 dB 2000-4300 MHz	1.5:1	2 dB 20-1000 MHz 4 dB 1000-4300 MHz	SMA female
50S-1199	1P8T (reflective)	20-4300 MHz	70 dB to 2000 MHz 50 dB to 4300 MHz	1.5:1	2 dB 20-1000 MHz 2.5 dB 1000-2000 MHz 3 dB 2000-3000 MHz 4 dB 3000-4300 MHz	SMA female
50S-1310	1P8T (absorptive)	20-4300 MHz	70 dB to 2000 MHz 50 dB to 4300 MHz	1.5:1	2.5 dB 20-1000 MHz 3 dB 1000-2000 MHz 3.5 dB 2000-3000 MHz 4.5 dB 3000-4300 MHz	SMA female

Model	Impedance	Switching Speed	RF Input Power	Supply Voltage	Control Logic	Operating Temperature
50S-1163	50 Ohms	20 microseconds	+20 dBm 20-100 MHz +30 dBm 100-4300 MHz	+24 Vdc @ 50 mA	(2 lines) TTL low-off (reflective) TTL high-on	0° C to +70° C operating -55° C to +90° C storage
50S-1220	50 Ohms	10 microseconds	+20 dBm 20-100 MHz +30 dBm 100-4300 MHz	+24 Vdc @ 50 mA +5 Vdc @ 50 mA	(2 lines) TTL low-off ports are internally terminated into 50 Ohms TTL high-on	0° C to +70° C operating -55° C to +90° C storage
50S-1035	50 Ohms	20 microseconds	+20 dBm 20-100 MHz +30 dBm 100-4300 MHz	+24 Vdc @ 50 mA	(4 lines) TTL low-off (reflective) TTL high-on	0° C to +70° C operating -55° C to +90° C storage
50S-1075	50 Ohms	10 microseconds	+20 dBm 20-100 MHz +30 dBm 100-4300 MHz	+24 Vdc @ 150 mA +5 Vdc @ 100 mA	(4 lines) TTL low-off ports are internally terminated into 50 Ohms TTL high-on	0° C to +70° C operating -55° C to +90° C storage
50S-1199	50 Ohms	20 microseconds	+20 dBm 20-100 MHz +30 dBm 100-4300 MHz	+24 Vdc @ 100 mA +5 Vdc @ 100 mA	(4 lines) TTL low-off (reflective) TTL high-on	0° C to +70° C operating -55° C to +90° C storage
50S-1310	50 Ohms	10 microseconds	+20 dBm 20-100 MHz +30 dBm 100-4300 MHz	+24 Vdc @ 200 mA +5 Vdc @ 150 mA	(4 lines) TTL low-off ports are internally terminated into 50 Ohms TTL high-on	0° C to +70° C operating -55° C to +90° C storage

This represents only 10% of our products. For YOUR application, contact JFW at 1-877-887-4JFW or sales@jfwindustries.com

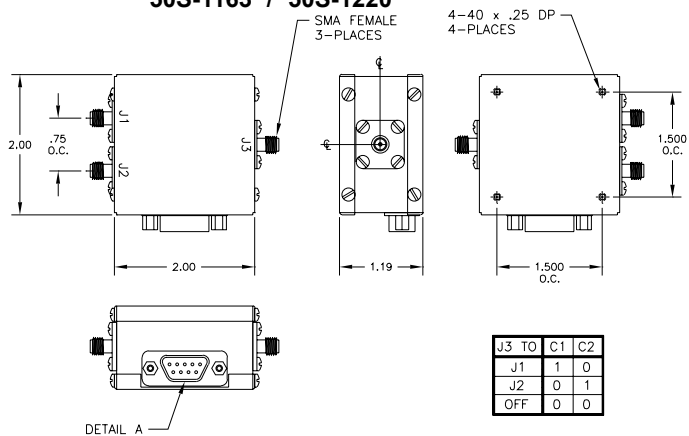
4.3 GHz Wide Band Solid State Coaxial Switches

50S-1163 / 50S-1220



PIN	50S-1163
1	TTL CONT. 1
2	TTL CONT. 2
3	NO CONNECTION
4	NO CONNECTION
5	NO CONNECTION
6	NO CONNECTION
7	NO CONNECTION
8	+24 Vdc
9	GND

PIN	50S-1220
1	TTL CONT. 1
2	TTL CONT. 2
3	NO CONNECTION
4	NO CONNECTION
5	NO CONNECTION
6	NO CONNECTION
7	+5 Vdc
8	+24 Vdc
9	GND

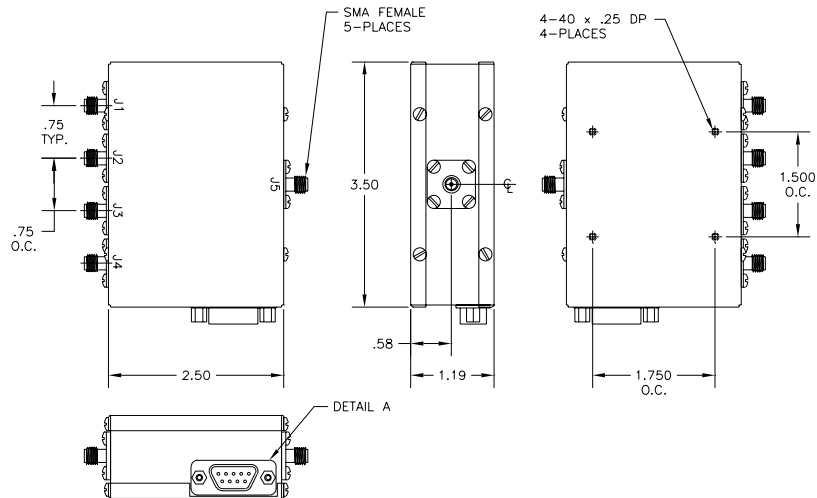


50S-1035 / 50S-1075

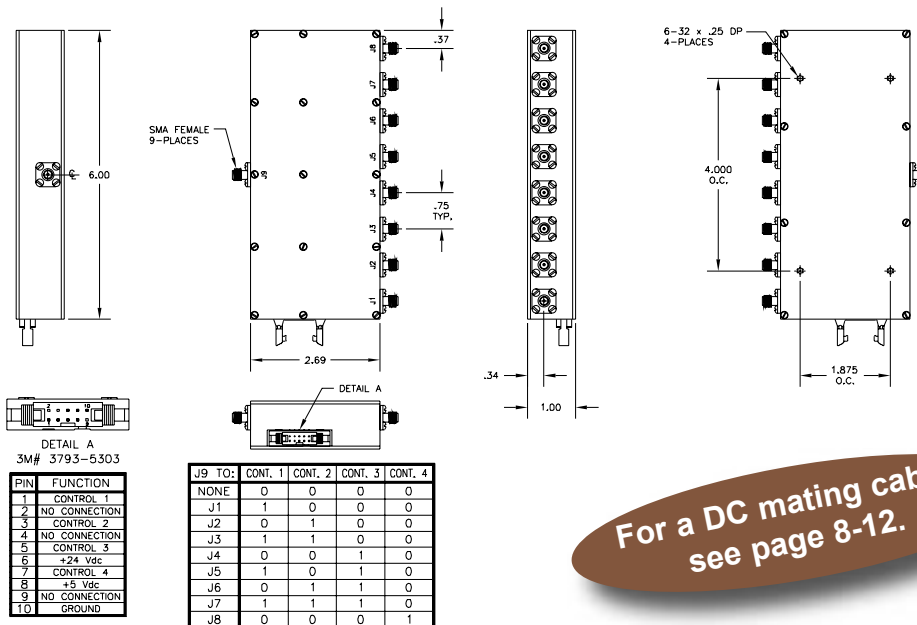


PIN	50S-1035
1	TTL CONT. 1
2	TTL CONT. 2
3	TTL CONT. 3
4	TTL CONT. 4
5	NO CONNECTION
6	NO CONNECTION
7	NO CONNECTION
8	+24 Vdc
9	GROUND

PIN	50S-1075
1	TTL CONT. 1
2	TTL CONT. 2
3	TTL CONT. 3
4	TTL CONT. 4
5	NO CONNECTION
6	NO CONNECTION
7	+5 Vdc
8	+24 Vdc
9	GROUND



50S-1199 / 50S-1310

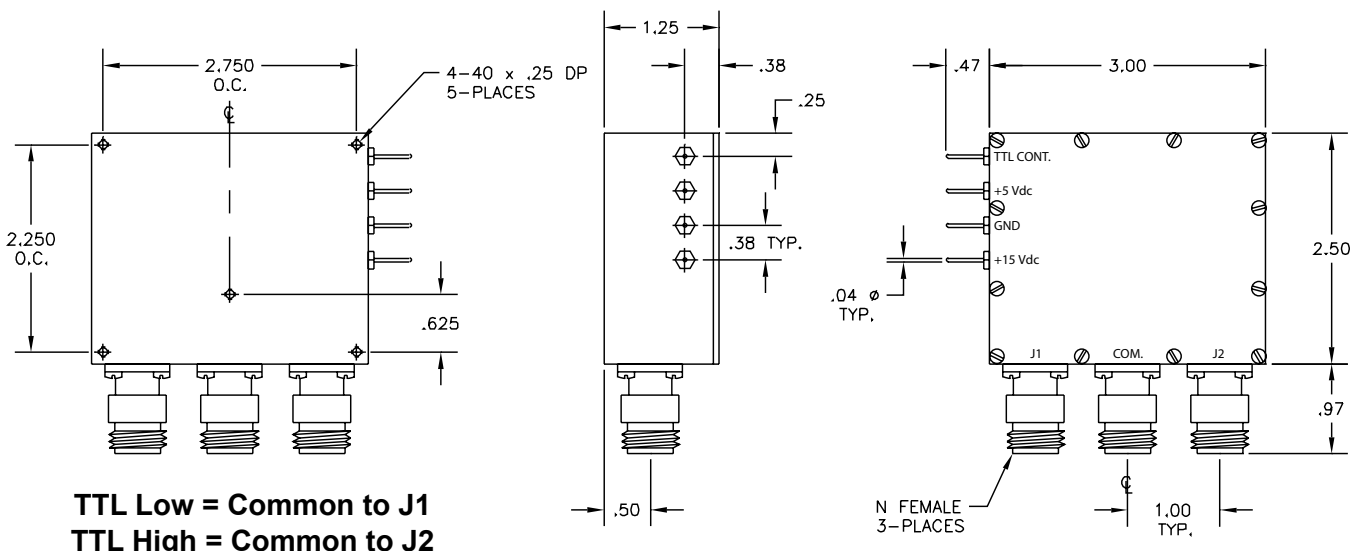


For a DC mating cable, see page 8-12.

High Power 1P2T Solid State Coaxial Switch

Model	Configuration	Frequency Range	Isolation (minimum)	VSWR (maximum)	Insertion Loss (maximum)	RF Connectors
50S-1268	1P2T (reflective)	100-500 MHz	55 dB	1.25:1	0.5 dB	SMA, TNC or N female
50S-1352	1P2T (reflective)	800-2500 MHz	45 dB 800-1000 MHz 36 dB 1000-2500 MHz	1.3:1 800-1000 MHz 1.4:1 1000-2500 MHz	0.5 dB 800-1000 MHz 0.7 dB 1000-2000 MHz 0.9 dB 2000-2500 MHz	SMA, N or TNC female
50S-1422	1P2T (reflective)	100-500 MHz	55 dB	1.25:1	0.5 dB	BNC, SMA, TNC or N female
50S-1505	1P2T (reflective)	20-2500 MHz	45 dB 20-1000 MHz 35 dB 1000-2500 MHz	1.4:1	0.7 dB 20-1000 MHz 1.0 dB 1000-2000 MHz 1.5 dB 2000-2500 MHz	SMA, TNC or N female
50S-1559	1P2T (reflective)	20-1000 MHz	50 dB 20-500 MHz 40 dB 500-1000 MHz	1.4:1	0.50 dB 20-500 MHz 0.75 dB 500-1000 MHz	BNC, SMA, TNC or N female

Model	Impedance	Switching Speed	RF Input Power	Supply Voltage	Operating Temperature
50S-1268	50 Ohm	40 microseconds (50% TTL to 10% or 90% RF)	100 Watts average (Cold Switch) 500 Watts peak (1 microsecond pulse) 100 Watts average (Hot Switch)	+12 Vdc to +15 Vdc @ 250 mA +5 Vdc @ 40 mA	-20° C to +70° C operating -55° C to +85° C storage
50S-1352	50 Ohm	10 microseconds (50% TTL to 10% or 90% RF) 30 microseconds (50% TTL to full isolation)	50 Watts average (Cold Switch) 200 Watts peak (1 microsecond pulse) 50 Watts average (Hot Switch)	+15 Vdc @ 325 mA +5 Vdc @ 40 mA	-20° C to +70° C operating -55° C to +85° C storage
50S-1422	50 Ohm	40 microseconds (50% TTL to 10% or 90% RF)	250 Watts average (Cold Switch) 500 Watts peak (1 microsecond pulse) 100 Watts average (Hot Switch)	+15 Vdc @ 250 mA +5 Vdc @ 40 mA	-20° C to +70° C operating -55° C to +85° C storage
50S-1505	50 Ohm	10 microseconds (50% TTL to 10% or 90% RF)	25 Watts average (Cold Switch) 200 Watts peak (1 microsecond pulse)	+15 Vdc @ 325 mA +5 Vdc @ 40 mA	-20° to +70° C operating
50S-1559	50 Ohm	40 microseconds (50% TTL to 10% or 90% RF)	150 Watts average (Cold switch) 50 Watts average (Hot Switch)	+15 Vdc @ 250 mA +5 Vdc @ 40 mA	-20° C to +70° C operating -55° C to +85° C storage

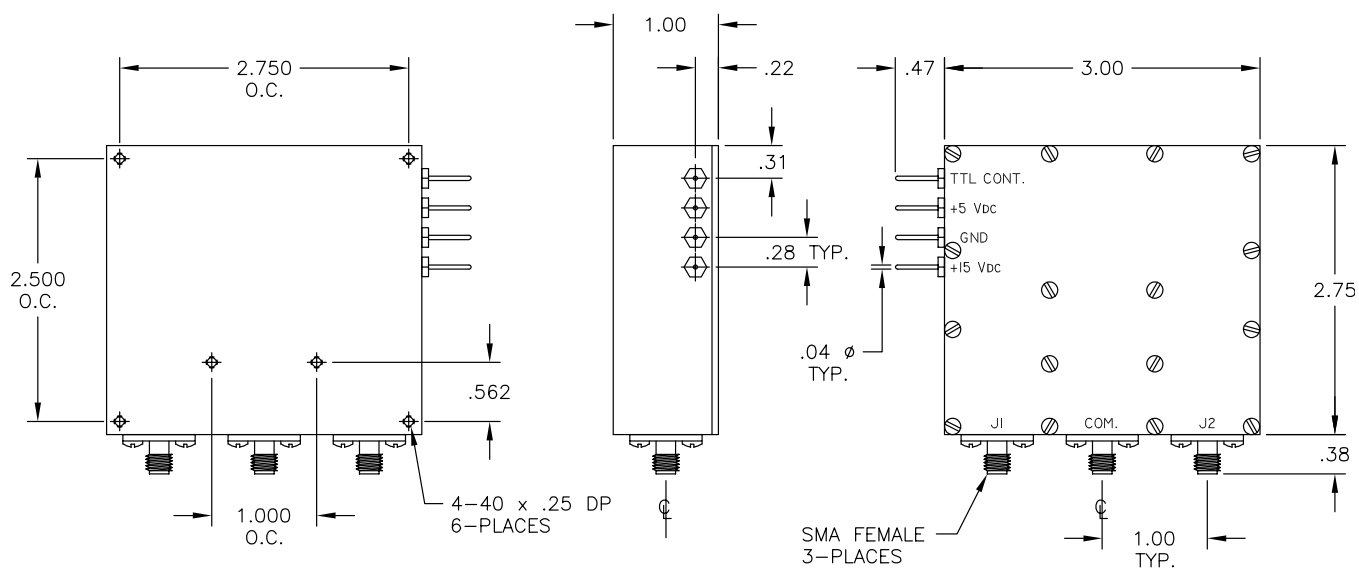


This represents only 10% of our products. For YOUR application, contact JFW at 1-877-887-4JFW or sales@jfwindustries.com

High Power Solid State Coaxial Switch

Model	Configuration	Frequency Range	Isolation (minimum)	VSWR (maximum)	Insertion Loss (maximum)	RF Connectors
50S-1820	1P2T (reflective)	800-2700 MHz	65 dB 800-2000 MHz 60 dB 2000-2700 MHz	1.4:1	1.00 dB 800-2000 MHz 1.20 dB 2000-2700 MHz	SMA, TNC or N female
50S-1821	1P2T (reflective)	800-3000 MHz	65 dB 800-2000 MHz 55 dB 2000-3000 MHz	1.4:1	1.00 dB 800-2000 MHz 1.30 dB 2000-3000 MHz	SMA, TNC or N female
50S-1841	1P2T (reflective)	500-3000 MHz	65 dB 500-2000 MHz 55 dB 2000-3000 MHz	1.5:1	0.75 dB 500-1000 MHz 0.90 dB 1000-2000 MHz 1.25 dB 2000-3000 MHz	SMA, TNC or N female

Model	Impedance	Switching Speed	RF Input Power (average)	Supply Voltage	Operating Temperature/ Storage Temperature
50S-1820	50 Ohms	10 microseconds maximum 6 microseconds typical (50% TTL to 10% or 90% RF)	100 Watts average (Cold switch) 30 Watts average (Hot Switch)	+15 Vdc @ 80 mA +5 Vdc @ 40 mA	-20° C to +70° C/ -55° C to +85° C
50S-1821	50 Ohms	10 microseconds maximum 6 microseconds typical (50% TTL to 10% or 90% RF)	75 Watts average (Cold switch) 30 Watts average (Hot Switch)	+15 Vdc @ 80 mA +5 Vdc @ 40 mA	-40° C to +125° C/ -55° C to +125° C
50S-1841	50 Ohms	10 microseconds maximum 6 microseconds typical (50% TTL to 10% or 90% RF)	30 Watts average (Hot Switch)	+15 Vdc @ 80 mA +5 Vdc @ 40 mA	-20° C to +70° C/ -55° C to +85° C



TTL LOW = COMMON TO J1
TTL HIGH = COMMON TO J2

This represents only 10% of our products. For YOUR application, contact JFW at 1-877-887-4JFW or sales@jfwindustries.com

50 Ohm High Power Solid-State Switches

Model	Configuration	Frequency Range	Isolation	VSWR (maximum)	Insertion Loss (maximum)	RF Connectors
50S-1407	1P3T (reflective)	100-500 MHz	50 dB minimum	1.3:1	0.5 dB	SMA, TNC or N female
50S-1525	1P4T (reflective)	100-500 MHz	50 dB minimum	1.3:1	0.55 dB	SMA, TNC or N female
50S-1524	1P6T (reflective)	100-500 MHz	50 dB nominal	1.3:1	0.75 dB	SMA, TNC or N female

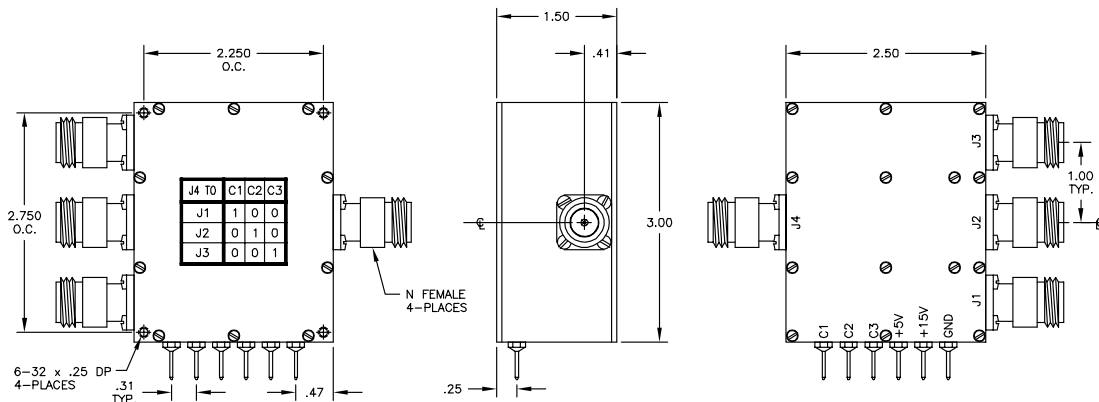
Model	Impedance	Switching Speed	RF Input Power	Supply Voltage	Control Logic*	Operating Temperature/ Storage Temperature
50S-1407	50 Ohms	40 microseconds (50% TTL to specified isolation)	250 Watts average (Cold switch) 500 Watts peak (1 microsecond) 20 Watts average (Hot switch)	+15 Vdc @ 400 mA +5 Vdc @ 80 mA	(3 lines) TTL See chart	-20° C to +70° C/ -55° C to +85° C
50S-1525	50 Ohms	40 microseconds (50% TTL to 10% or 90% RF)	100 Watts average (Cold switch) 500 Watts peak (1 microsecond) 20 Watts average (Hot switch)	+15 Vdc @ 650 mA +5 Vdc @ 150 mA	(3 lines) TTL See chart	-20° C to +70° C/ -55° C to +85° C
50S-1524	50 Ohms	40 microseconds (50% TTL to 10% or 90% RF)	100 Watts average (Cold switch) 500 Watts peak (1 microsecond) 20 Watts average (Hot switch)	+15 Vdc @ 750 mA +5 Vdc @ 150 mA	(3 lines) TTL See chart	-20° C to +70° C/ -55° C to +85° C

*Only one active port at a time.

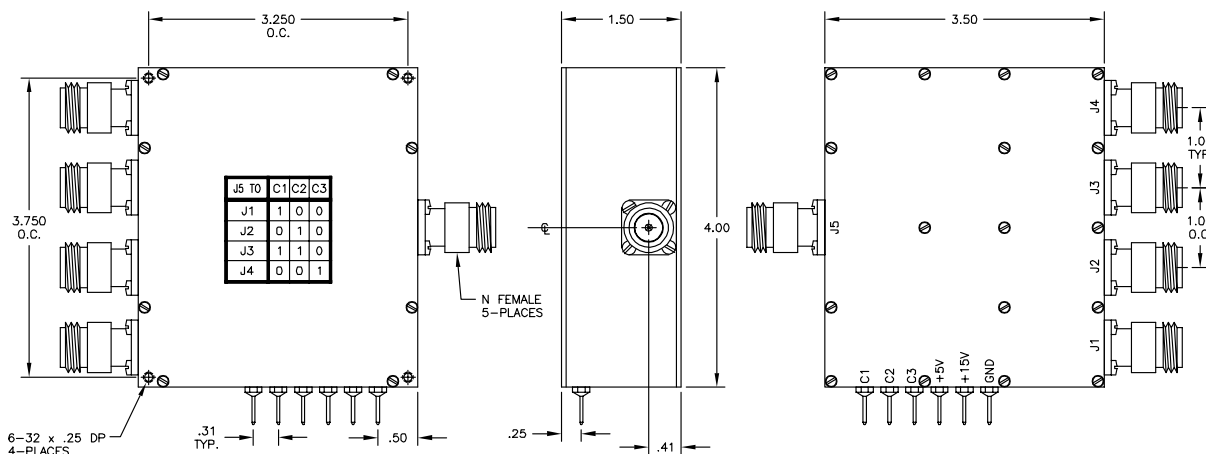
This represents only 10% of our products. For YOUR application, contact JFW at 1-877-887-4JFW or sales@jfwindustries.com

50 Ohm High Power Solid-State Switches

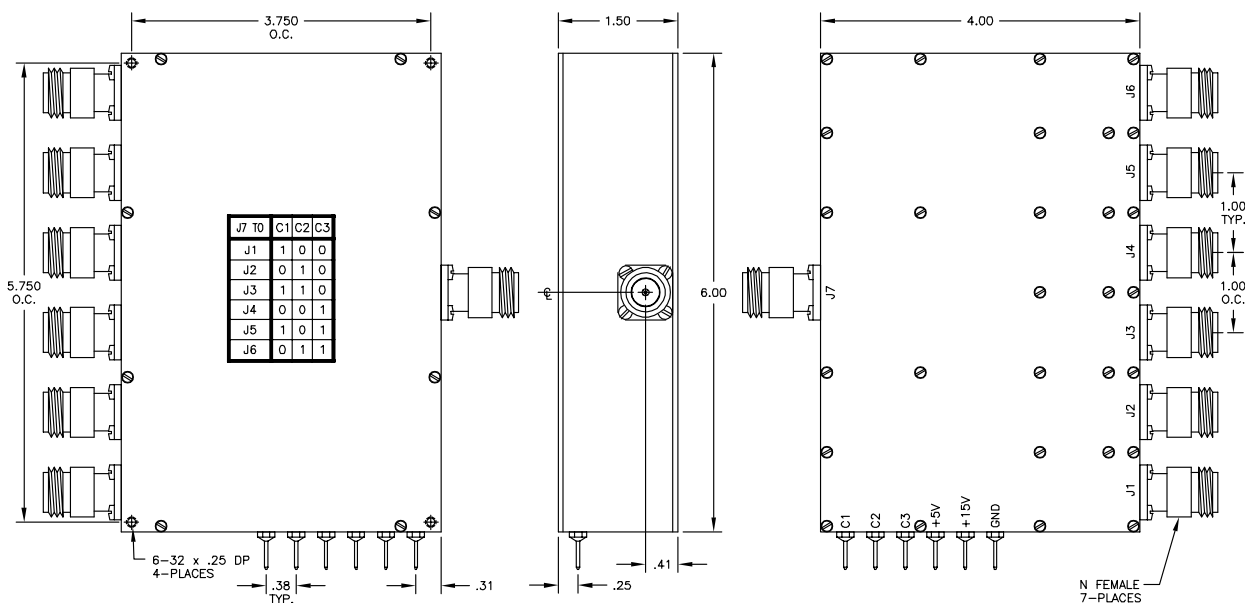
50S-1407



50S-1525



50S-1524



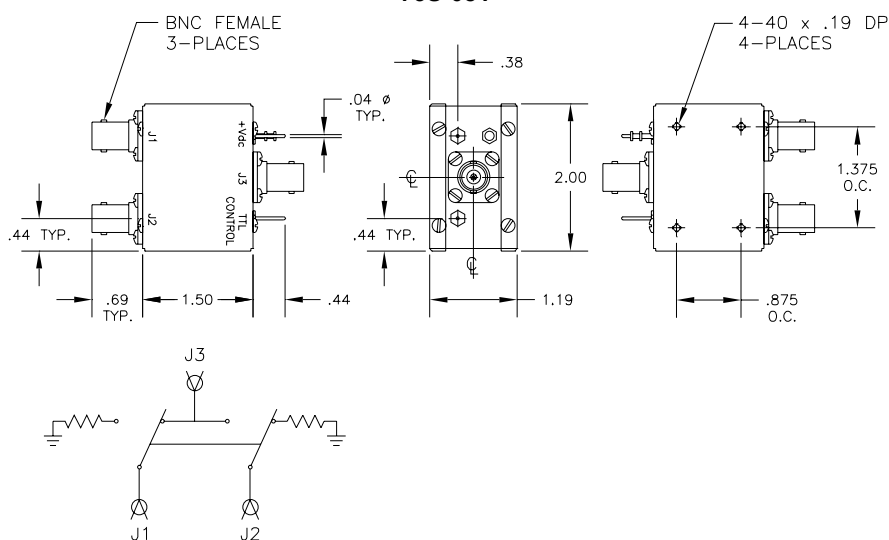
This represents only 10% of our products. For YOUR application, contact JFW at 1-877-887-4JFW or sales@jfwindustries.com

75 Ohm Solid State Coaxial Switches

Model	Configuration	Frequency Range	Isolation (minimum)	VSWR (maximum)	Insertion Loss (maximum)	RF Connectors
75S-081	1P2T (absorptive)	5-1000 MHz	60 dB 5-500 MHz 55 dB 500-1000 MHz	1.2:1 5-300 MHz 1.3:1 300-600 MHz 1.4:1 600-1000 MHz	1.5 dB 5-500 MHz 2.5 dB 500-1000 MHz	BNC, F or N female
75S-225	1P4T (reflective)	5-1000 MHz	60 dB	1.2:1	2.25 dB	BNC or F female
75S-181	1P8T (reflective)	5-1000 MHz	70 dB 5-50 MHz 60 dB 50-500 MHz 55 dB 500-1000 MHz	1.3:1 5-500 MHz 1.4:1 500-1000 MHz	1.5 dB 5-500 MHz 2.0 dB 500-1000 MHz	BNC or F female
75S-264	1P16T (absorptive)	20-1000 MHz	55 dB	1.4:1	2.0 dB	BNC or F female

Model	Impedance	Switching Speed	RF Input Power	Supply Voltage	Control Logic	Operating Temperature
75S-081	75 Ohms	20 microseconds	+20 dBm (1 dB compression)	+5 Vdc @ 100 mA	(2 lines) TTL low for J3 to J1 TTL high for J3 to J2 off port terminated into 75 Ohms	0° C to +70° C
75S-225	75 Ohms	10 microseconds	+20 dBm (1 dB compression)	+24 Vdc @ 50 mA nominal	(4 lines) TTL low-off (reflective) TTL high-on	0° C to +70° C
75S-181	75 Ohms	200 microseconds	+10 dBm	+28 Vdc @ 250 mA maximum	(8 lines) TTL low-off (reflective) TTL high-on	0° C to +70° C
75S-264	75 Ohms	50 microseconds	+20 dBm	+5 Vdc @ 100 mA +15 Vdc @ 200 mA -15 Vdc @ 500 mA	(5 lines) TTL per drawing off ports terminated into 75 Ohms	0° C to +70° C

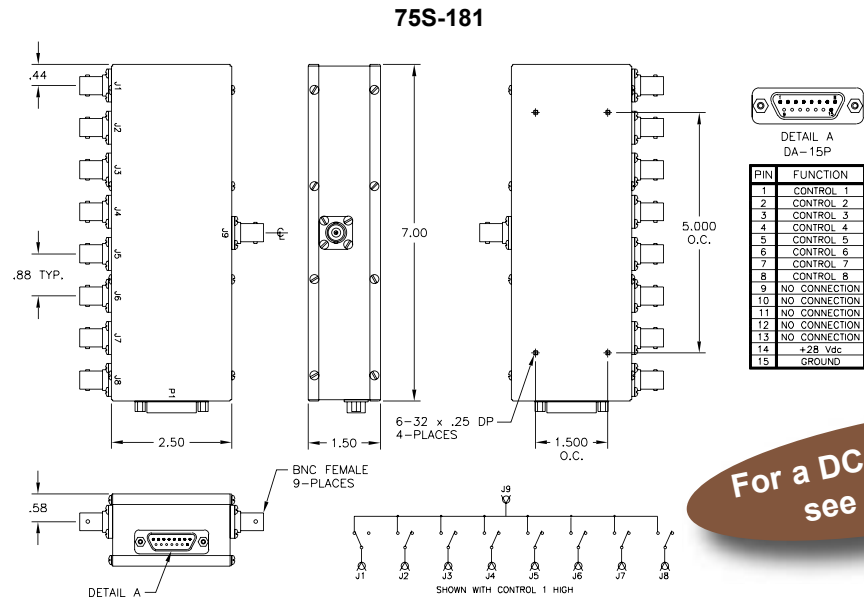
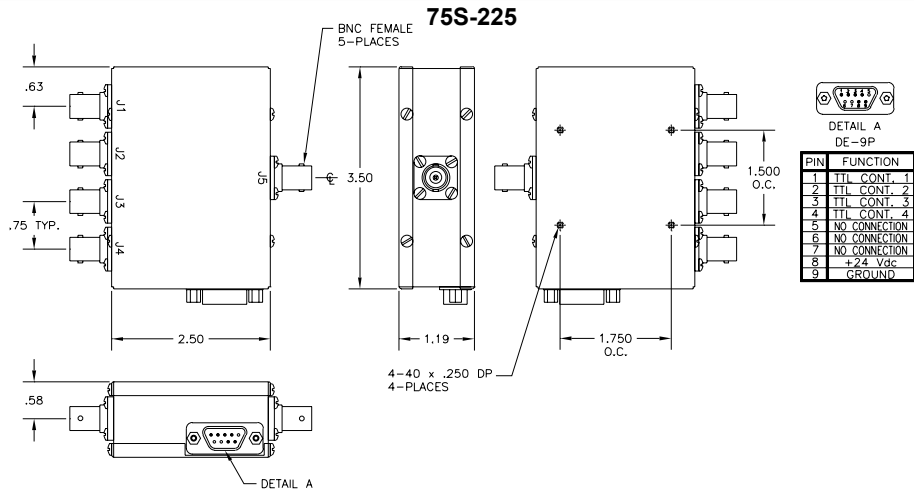
75S-081



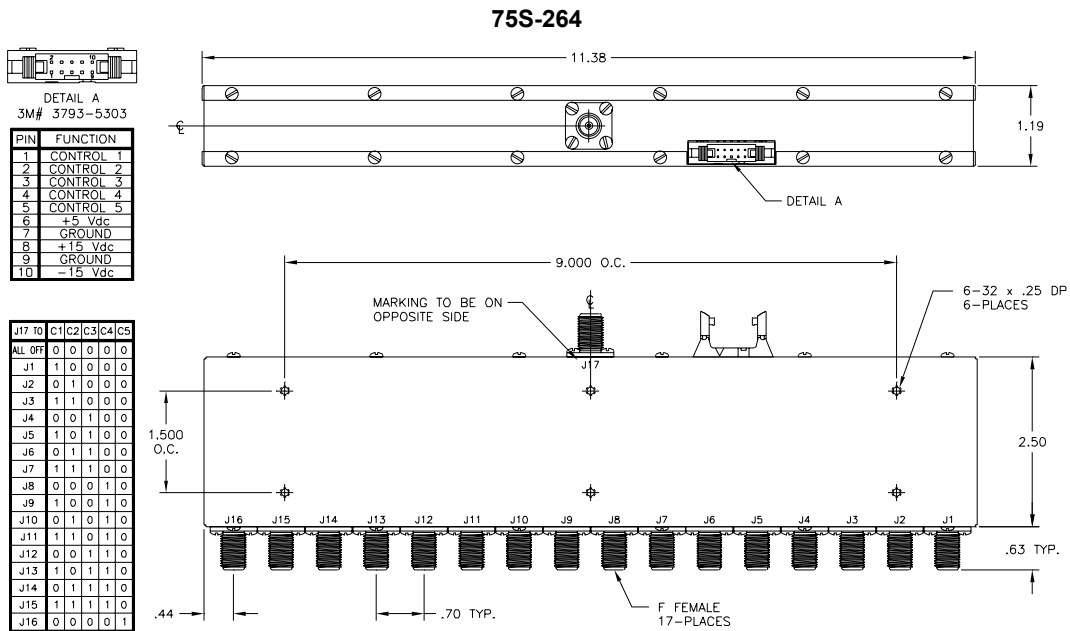
SHOWN WITH TTL LOW

This represents only 10% of our products. For YOUR application, contact JFW at 1-877-887-4JFW or sales@jfwindustries.com

75 Ohm Solid State Coaxial Switches



For a DC mating cable, see page 8-12.



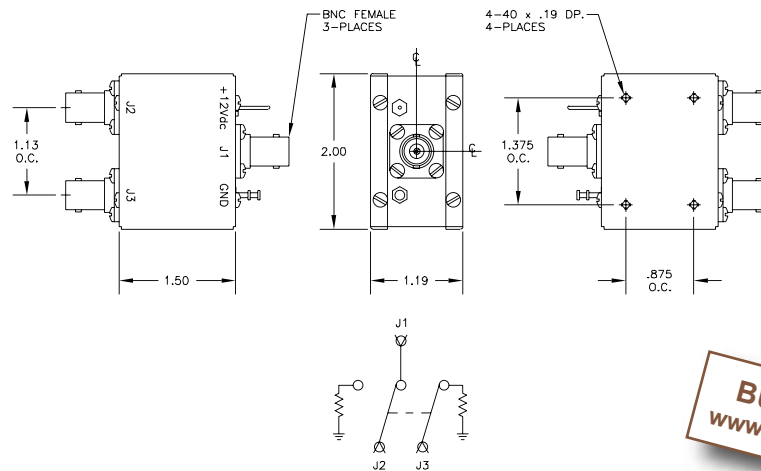
This represents only 10% of our products. For YOUR application, contact JFW at 1-877-887-4JFW or sales@jfwindustries.com

75 Ohm Electro-mechanical Coaxial Switches

Model	Configuration	Frequency Range	Isolation (minimum)	VSWR (maximum)	Insertion Loss (maximum)	RF Connectors
75S-111	1P2T (failsafe, absorptive)	DC-2150 MHz	50 dB DC-1000 MHz 45 dB 1000-2150 MHz	1.3:1 DC-1000 MHz 1.5:1 1000-2150 MHz	0.75 dB DC-1000 MHz 1.0 dB 1000-2150 MHz	BNC or F female
75S-306	1P4T (N.O., absorptive)	DC-2150 MHz	70 dB DC-500 MHz 50 dB 500-2150 MHz	1.2:1 DC-500 MHz 1.4:1 500-2150 MHz	0.8 dB	BNC or F female
75S-221	1P8T (failsafe, absorptive)	DC-2150 MHz	60 dB DC-500 MHz 50 dB 500-2150 MHz	1.5:1	1.0 dB DC-1000 MHz 2.0 dB 1000-2150 MHz	BNC or F female
75S-303	1P16T (failsafe, absorptive)	DC-2150 MHz	70 dB DC-1000 MHz 50 dB 1000-2150 MHz	1.5:1	0.75 dB DC-1000 MHz 1.50 dB 1000-2150 MHz	BNC or F female

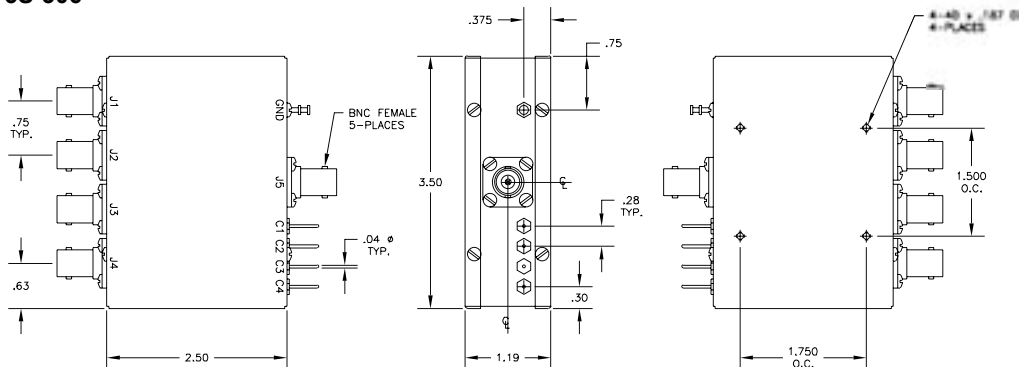
Model	Impedance	Switching Speed	RF Input Power	Control Voltage	Operating Temperature
75S-111	75 Ohms	10 milliseconds	+20 dBm	+12 Vdc @ 90 mA	-20° C to +85° C
75S-306	75 Ohms	10 milliseconds	+20 dBm	+12 Vdc @ 60 mA	-20° C to +85° C
75S-221	75 Ohms	10 milliseconds	+20 dBm	+12 Vdc @ 110 mA	-20° C to +85° C
75S-303	75 Ohms	10 milliseconds	+27 dBm	+12 Vdc @ 50 mA	-20° C to +85° C

75S-111



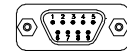
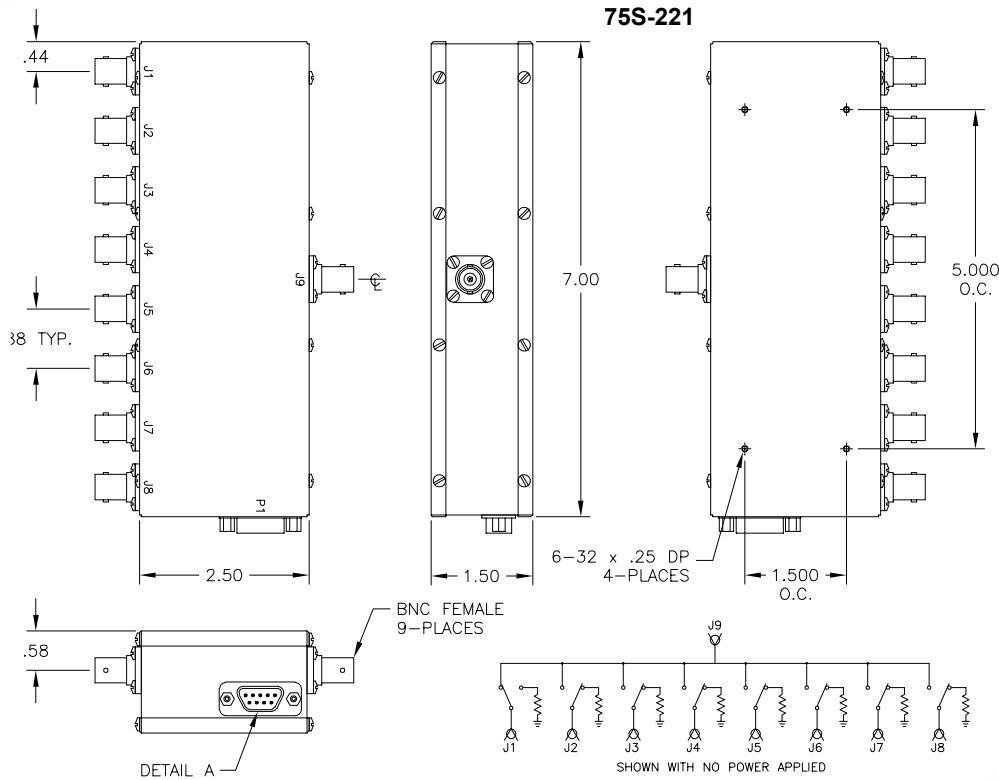
BUY ONLINE AT
www.jfwindustries.com

75S-306



This represents only 10% of our products. For YOUR application, contact JFW at 1-877-887-4JFW or sales@jfwindustries.com

75 Ohm Electro-mechanical Coaxial Switches



DETAIL A
DE-9P

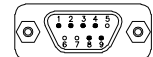
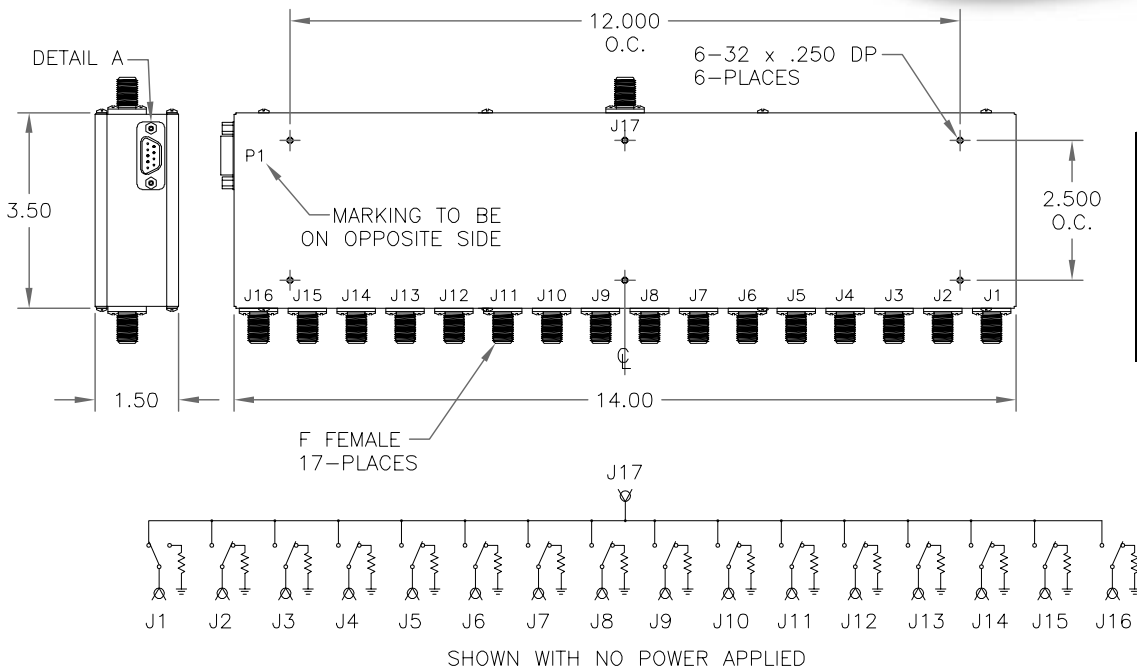
PIN	75S-221
1	GROUND
2	CONTROL 2
3	CONTROL 3
4	CONTROL 4
5	CONTROL 5
6	CONTROL 6
7	CONTROL 7
8	CONTROL 8
9	GROUND

J9 TO	PIN NUMBER
J2	1 0 0 0 0 0 0 0
J3	0 1 0 0 0 0 0 0
J4	0 0 1 0 0 0 0 0
J5	0 0 0 1 0 0 0 0
J6	0 0 0 0 1 0 0 0
J7	0 0 0 0 0 1 0 0
J8	0 0 0 0 0 0 1 0

NOTE:
WITH NO POWER APPLIED
TO DE-9 CONNECTOR
COMMON IS FAILSAFE
CONNECTED TO J-1

*For a DC mating cable,
see page 8-12.*

75S-303



DETAIL A
DE-9P

PIN	FUNCTION
1	CONTROL 1
2	CONTROL 2
3	CONTROL 3
4	CONTROL 4
5	
6	
7	
8	+12 Vdc
9	GROUND

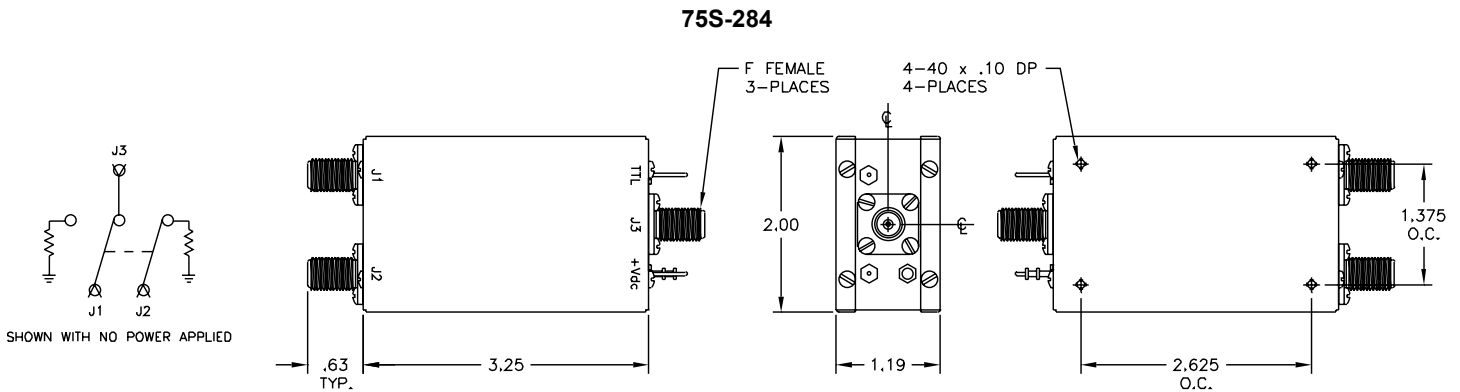
J17 TO	CONT.
J1	0 0 0 0
J2	1 0 0 0
J3	0 1 0 0
J4	1 1 0 0
J5	0 0 1 0
J6	1 0 1 0
J7	0 1 1 0
J8	1 1 1 0
J9	0 0 0 1
J10	1 0 0 1
J11	0 1 0 1
J12	1 1 0 1
J13	0 0 1 1
J14	1 0 1 1
J15	0 1 1 1
J16	1 1 1 1

NOTE : WITH NO POWER APPLIED TO DE-9 CONNECTOR
COMMON IS FAILSAFE CONNECTED TO J1

High Isolation 75 Ohm Electro-mechanical Coaxial Switches

Model	Configuration	Frequency Range	Isolation (minimum)	VSWR (maximum)	Insertion Loss (maximum)	RF Connectors	RF Input Power
75S-284	1P2T (failsafe, absorptive)	DC-2000 MHz	80 dB	1.3:1 DC-1000 MHz 1.5:1 1000-2000 MHz	1.25 dB DC-1000 MHz 1.75 dB 1000-2000 MHz	F female	+20 dBm
75S-285	1P3T (N.O., absorptive)	DC-2000 MHz	80 dB	1.3:1 DC-1000 MHz 1.5:1 1000-2000 MHz	1.5 dB DC-1000 MHz 2.0 dB 1000-2000 MHz	F female	+20 dBm
75S-295	1P4T (N.O., absorptive)	DC-2000 MHz	80 dB	1.3:1 DC-1000 MHz 1.5:1 1000-2000 MHz	1.5 dB DC-1000 MHz 2.0 dB 1000-2000 MHz	F female	+20 dBm

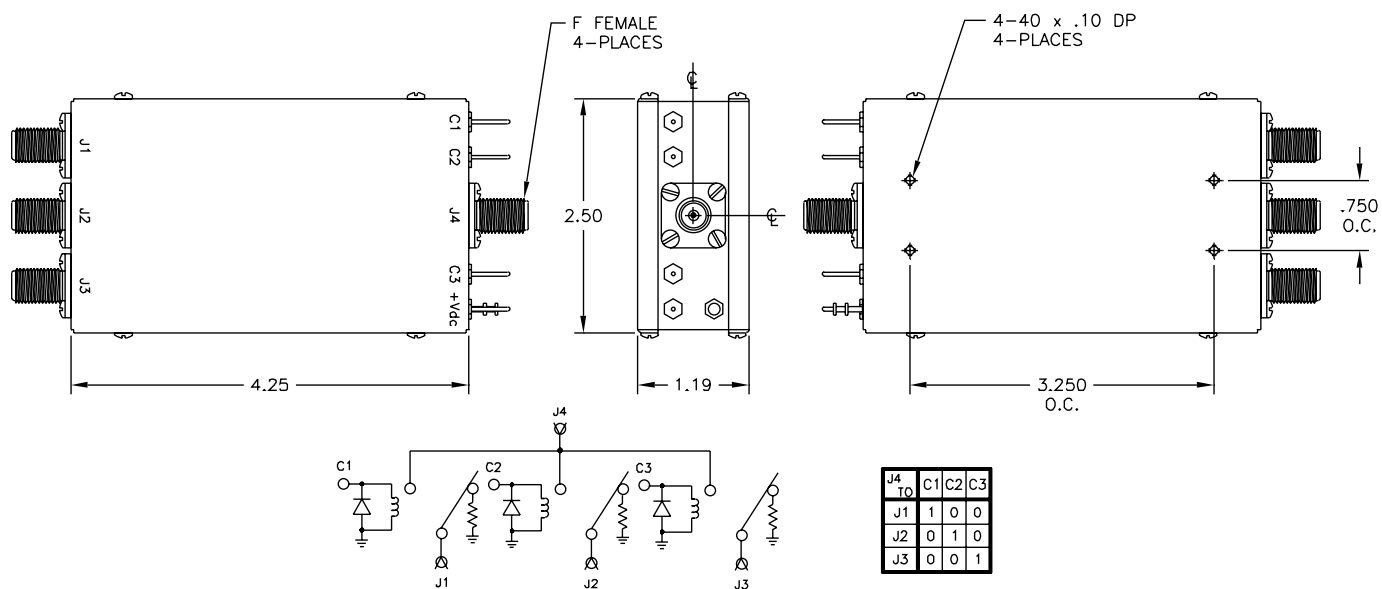
Model	Impedance	Switching Speed	DC Supply	Operating Temperature	Control Logic
75S-284	75 Ohms	10 milliseconds	+12 Vdc (10-15 Vdc) @ 120 mA	-20° C to +85° C	(1 Line) TTL low for J3 to J1 TTL high for J3 to J2 off port terminated into 75 Ohms
75S-285	75 Ohms	10 milliseconds	+12 Vdc (10-15 Vdc) @ 120 mA	-20° C to +85° C	(3 Lines) TTL per drawing on next page off ports terminated into 75 Ohms
75S-295	75 Ohms	10 milliseconds	+12 Vdc (10-15 Vdc) @ 120 mA	-20° C to +85° C	(4 Lines) TTL per drawing on next page off ports terminated into 75 Ohms



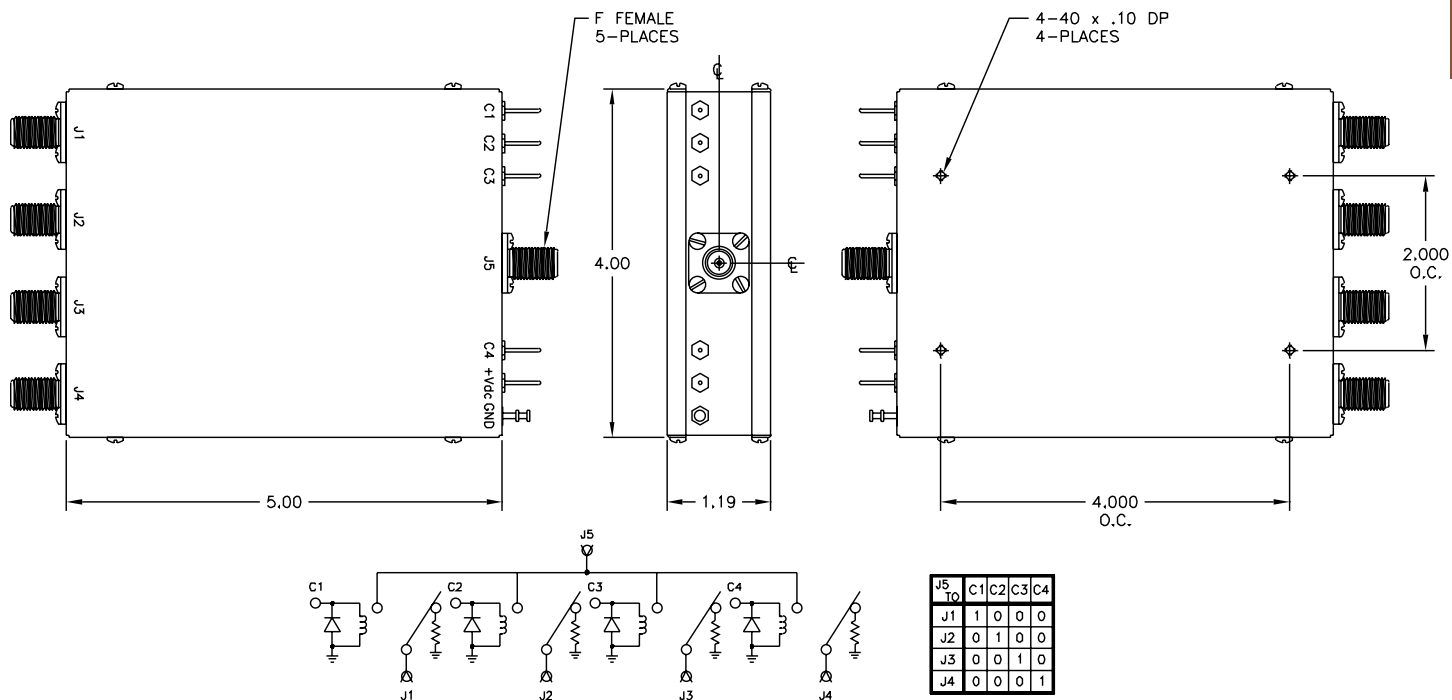
This represents only 10% of our products. For YOUR application, contact JFW at 1-877-887-4JFW or sales@jfwindustries.com

High Isolation 75 Ohm Electro-mechanical Coaxial Switches

75S-285



75S-295



This represents only 10% of our products. For YOUR application, contact JFW at 1-877-887-4JFW or sales@jfwindustries.com

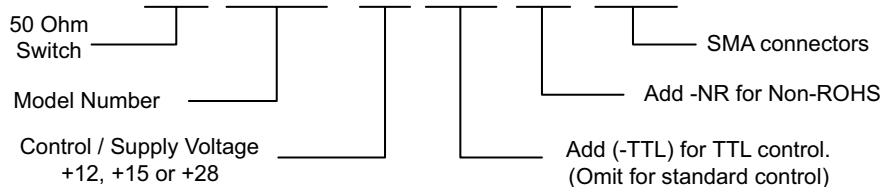
18 GHz Electro-mechanical Coaxial Switches

Model	Configuration	Frequency Range	Isolation (minimum)	VSWR (maximum)	Insertion Loss (maximum)	RF Connectors
50S-1313	1P2T (failsafe, reflective)	DC-18 GHz	85 dB DC-1 GHz 80 dB 1-4 GHz 70 dB 4-8 GHz 65 dB 8-12 GHz 60 dB 12-18 GHz	1.1:1 DC-1 GHz 1.15:1 1-4 GHz 1.2:1 4-8 GHz 1.3:1 8-12 GHz 1.35:1 12-18 GHz	0.10 dB DC-1 GHz 0.15 dB 1-4 GHz 0.20 dB 4-8 GHz 0.30 dB 8-12 GHz 0.35 dB 12-18 GHz	SMA female
50S-1360	1P3T (N.O., reflective)	DC-18 GHz	70 dB DC-4 GHz 65 dB 4-8 GHz 60 dB 8-18 GHz	1.2:1 DC-4 GHz 1.3:1 4-8 GHz 1.4:1 8-12 GHz 1.5:1 12-18 GHz	0.20 dB DC-4 GHz 0.30 dB 4-8 GHz 0.40 dB 8-12 GHz 0.50 dB 12-18 GHz	SMA female
50S-1315	1P4T (N.O., reflective)	DC-18 GHz	70 dB DC-4 GHz 65 dB 4-8 GHz 60 dB 8-18 GHz	1.2:1 DC-4 GHz 1.3:1 4-8 GHz 1.4:1 8-12 GHz 1.5:1 12-18 GHz	0.20 dB DC-4 GHz 0.30 dB 4-8 GHz 0.40 dB 8-12 GHz 0.50 dB 12-18 GHz	SMA female

Model	Impedance	Switching Speed	RF Input Power (average)	Control Voltage / Supply Voltage (Non-TTL) (TTL)	Operating Temperature	Lifetime (minimum)
50S-1313	50 Ohms	15 milliseconds	See Power Table Below	+12 Vdc @ 200 mA nominal +15 Vdc @ 200 mA nominal +28 Vdc @ 100 mA nominal	-25° C to +65° C	1 million cycles
50S-1360	50 Ohms	20 milliseconds	See Power Table Below	+12 Vdc @ 325 mA nominal +15 Vdc @ 280 mA nominal +28 Vdc @ 160 mA nominal	-25° C to +65° C	1 million cycles
50S-1315	50 Ohms	20 milliseconds	See Power Table Below	+12 Vdc @ 325 mA nominal +15 Vdc @ 280 mA nominal +28 Vdc @ 160 mA nominal	-25° C to +65° C	1 million cycles

Power Table								
Frequency Range	DC-100 MHz	100-200 MHz	200-500 MHz	500-1000 MHz	1-4 GHz	4-8 GHz	8-12 GHz	12-18 GHz
Maximum Average RF Power	500 Watts	400 Watts	300 Watts	200 Watts	100 Watts	90 Watts	70 Watts	60 Watts

50S-AAAA+BB-TTL-NR SMA

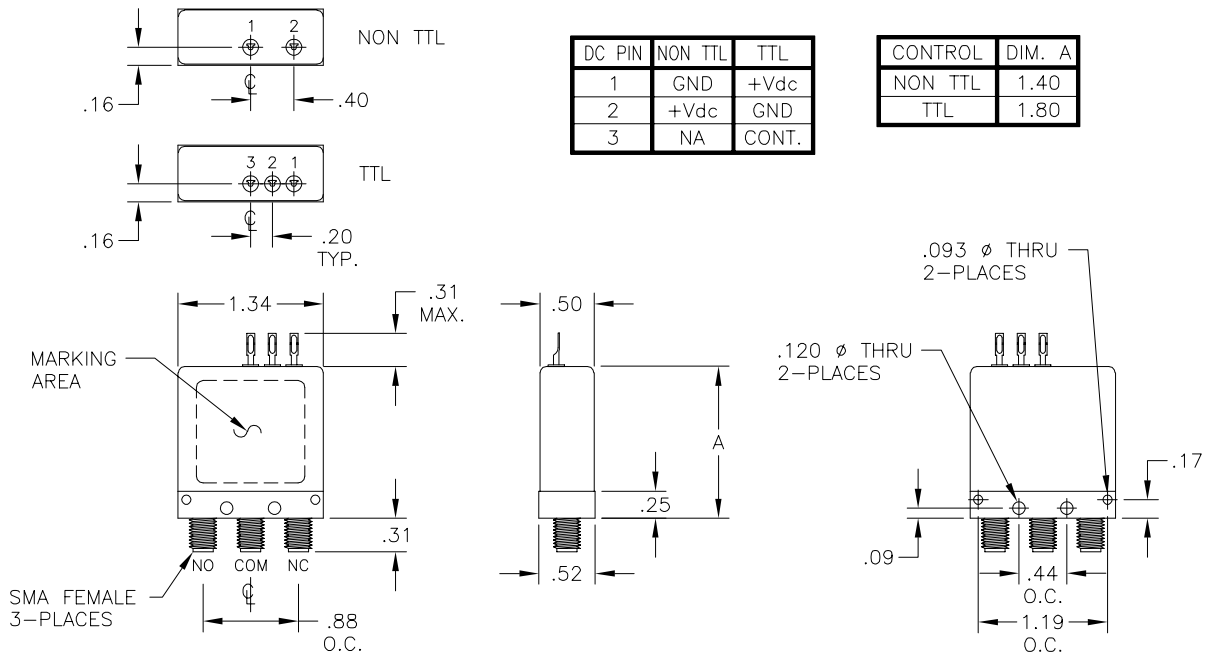


Examples: 50S-1313+12-NR SMA (1P2T / +12 Volt / NON-TTL / Non-ROHS)
50S-1315+28-TTL SMA (1P4T / +28 Volt / TTL)

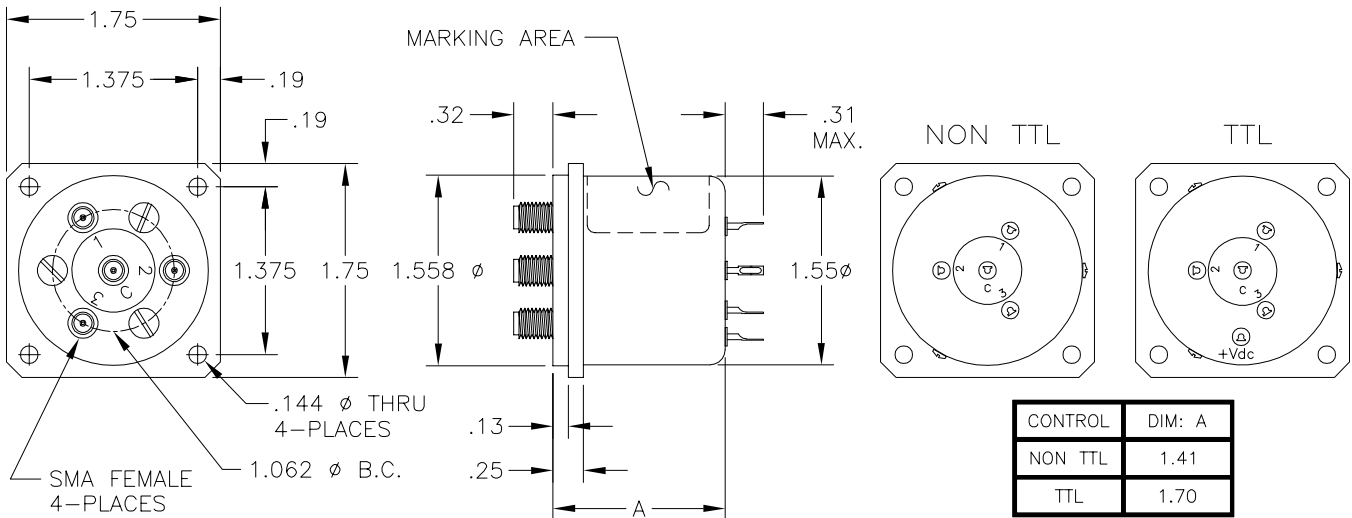
BUY ONLINE AT
www.jfwindustries.com

18 GHz Electro-mechanical Coaxial Switches

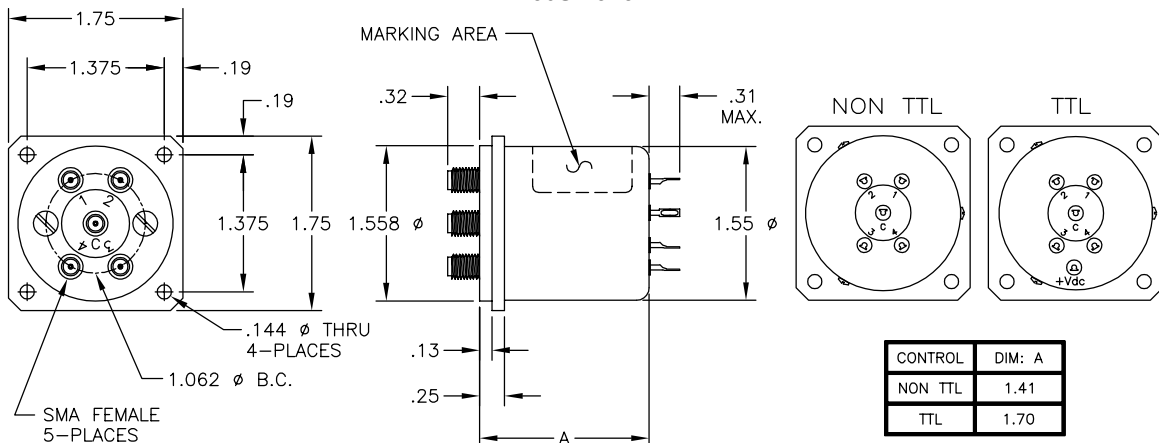
50S-1313



50S-1360



50S-1315



This represents only 10% of our products. For YOUR application, contact JFW at 1-877-887-4JFW or sales@jfwindustries.com

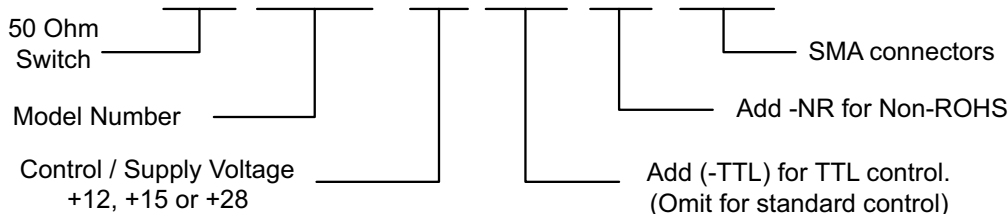
18 GHz Electro-mechanical Coaxial Switches

Model	Configuration	Frequency Range	Isolation (minimum)	VSWR (maximum)	Insertion Loss (maximum)	RF Connectors
50S-1316	1P6T (N.O., reflective)	DC-18 GHz	70 dB DC-4 GHz 65 dB 4-8 GHz 60 dB 8-18 GHz	1.2:1 DC-4 GHz 1.3:1 4-8 GHz 1.4:1 8-12 GHz 1.5:1 12-18 GHz	0.20 dB DC-4 GHz 0.30 dB 4-8 GHz 0.40 dB 8-12 GHz 0.50 dB 12-18 GHz	SMA female
50S-1317	1P8T (N.O., reflective)	DC-18 GHz	70 dB DC-4 GHz 65 dB 4-8 GHz 60 dB 8-16 GHz 55 dB 16-18 GHz	1.25:1 DC-4 GHz 1.35:1 4-8 GHz 1.40:1 8-12 GHz 1.50:1 12-16 GHz 1.80:1 16-18 GHz	0.20 dB DC-4 GHz 0.30 dB 4-8 GHz 0.40 dB 8-12 GHz 0.50 dB 12-16 GHz 0.80 dB 16-18 GHz	SMA female

Model	Impedance	Switching Speed	RF Input Power (average)	Control Voltage / Supply Voltage (Non-TTL) (TTL)	Operating Temperature	Lifetime (minimum)
50S-1316	50 Ohms	20 milliseconds	See Power Table Below	+12 Vdc @ 325 mA nominal +15 Vdc @ 280 mA nominal +28 Vdc @ 160 mA nominal	-25° C to +65° C	1 million cycles
50S-1317	50 Ohms	15 milliseconds	See Power Table Below	+12 Vdc @ 285 mA nominal +15 Vdc @ 225 mA nominal +28 Vdc @ 120 mA nominal	-25° C to +65° C	1 million cycles

Power Table								
Frequency Range	DC-100 MHz	100-200 MHz	200-500 MHz	500-1000 MHz	1-4 GHz	4-8 GHz	8-12 GHz	12-18 GHz
Maximum Average RF Power	500 Watts	400 Watts	300 Watts	200 Watts	100 Watts	90 Watts	70 Watts	60 Watts

50S-AAAA+BB-TTL-NR SMA

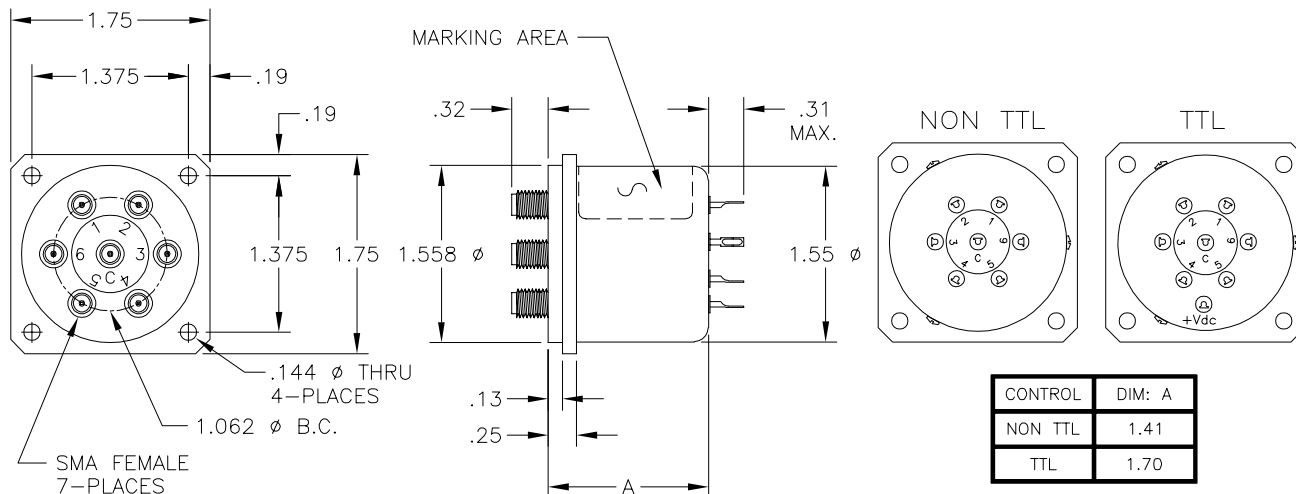


Examples: 50S-1313+12-NR SMA (1P2T / +12 Volt / NON-TTL / Non-ROHS)
 50S-1315+28-TTL SMA (1P4T / +28 Volt / TTL)

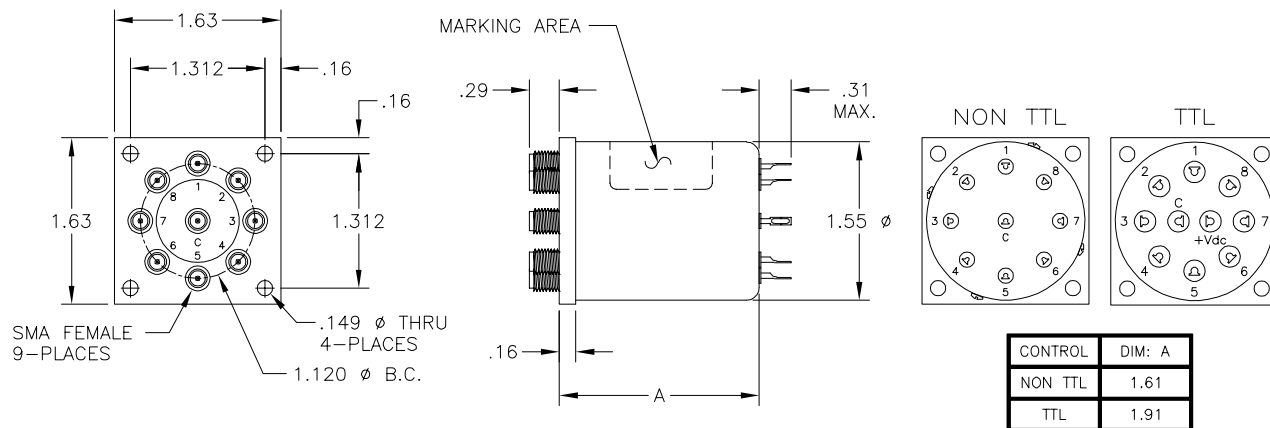
BUY ONLINE AT
www.jfwindustries.com

18 GHz Electro-mechanical Coaxial Switches

50S-1316



50S-1317



This represents only 10% of our products. For YOUR application, contact JFW at 1-877-887-4JFW or sales@jfwindustries.com

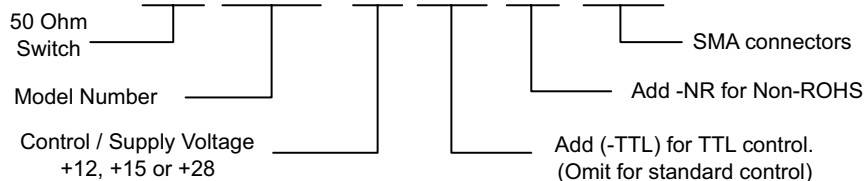
18 GHz Electro-mechanical Coaxial Switches

Model	Configuration	Frequency Range	Isolation (minimum)	VSWR (maximum)	Insertion Loss (maximum)	RF Connectors
50S-1361	Transfer Switch (failsafe)	DC-18 GHz	85 dB DC-1 GHz 80 dB 1-4 GHz 70 dB 4-8 GHz 65 dB 8-12 GHz 60 dB 12-18 GHz	1.1:1 DC-1 GHz 1.2:1 1-4 GHz 1.3:1 4-8 GHz 1.4:1 8-12 GHz 1.5:1 12-18 GHz	0.10 dB DC-1 GHz 0.20 dB 1-4 GHz 0.30 dB 4-8 GHz 0.40 dB 8-12 GHz 0.50 dB 12-18 GHz	SMA female

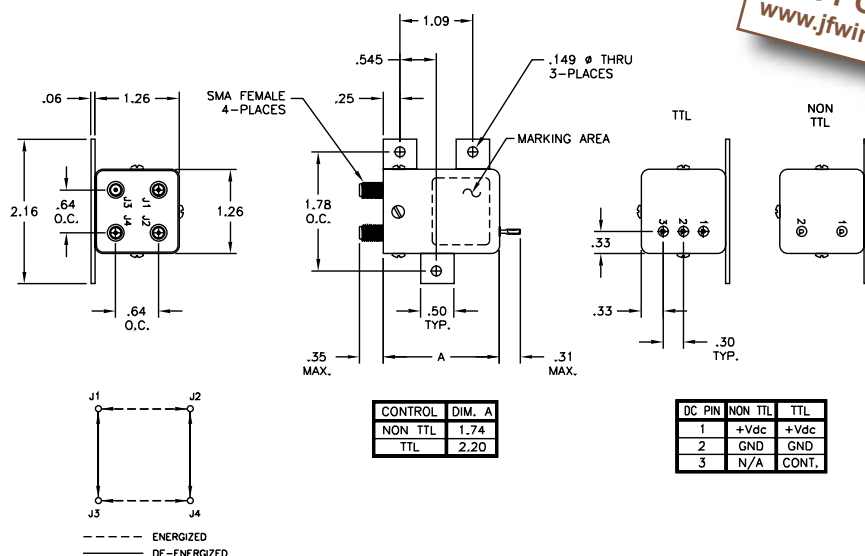
Model	Impedance	Switching Speed	RF Input Power (average)	Control Voltage / Supply Voltage (Non-TTL) (TTL)	Operating Temperature	Lifetime (minimum)
50S-1361	50 Ohms	20 milliseconds	See Power Table Below	+12 Vdc @ 360 mA nominal +15 Vdc @ 290 mA nominal +28 Vdc @ 150 mA nominal	-25° C to +65° C	1 million cycles

Power Table								
Frequency Range	DC-100 MHz	100-200 MHz	200-500 MHz	500-1000 MHz	1-4 GHz	4-8 GHz	8-12 GHz	12-18 GHz
Maximum Average RF Power	500 Watts	400 Watts	300 Watts	200 Watts	100 Watts	90 Watts	70 Watts	60 Watts

50S-AAAA+BB-TTL-NR SMA



Examples: 50S-1313+12-NR SMA (1P2T / +12 Volt / NON-TTL / Non-ROHS)
50S-1315+28-TTL SMA (1P4T / +28 Volt / TTL)



BUY ONLINE AT
www.jfwindustries.com

This represents only 10% of our products. For YOUR application, contact JFW at 1-877-887-4JFW or sales@jfwindustries.com